

THE *Eneabba*

SPRING 2020 ISSUE 2

Road Trip to The Pilbara

WE VISIT NEWMAN, PORT HEDLAND & KARRATHA

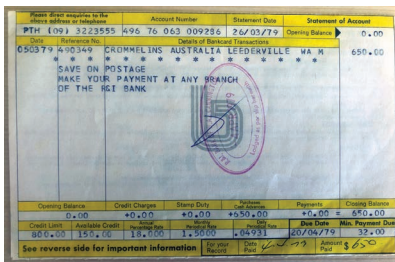


- Onsite With Wormall Civil
- Darwin's Finnis Lithium Project
- The RMHC Charity Digger Arrives

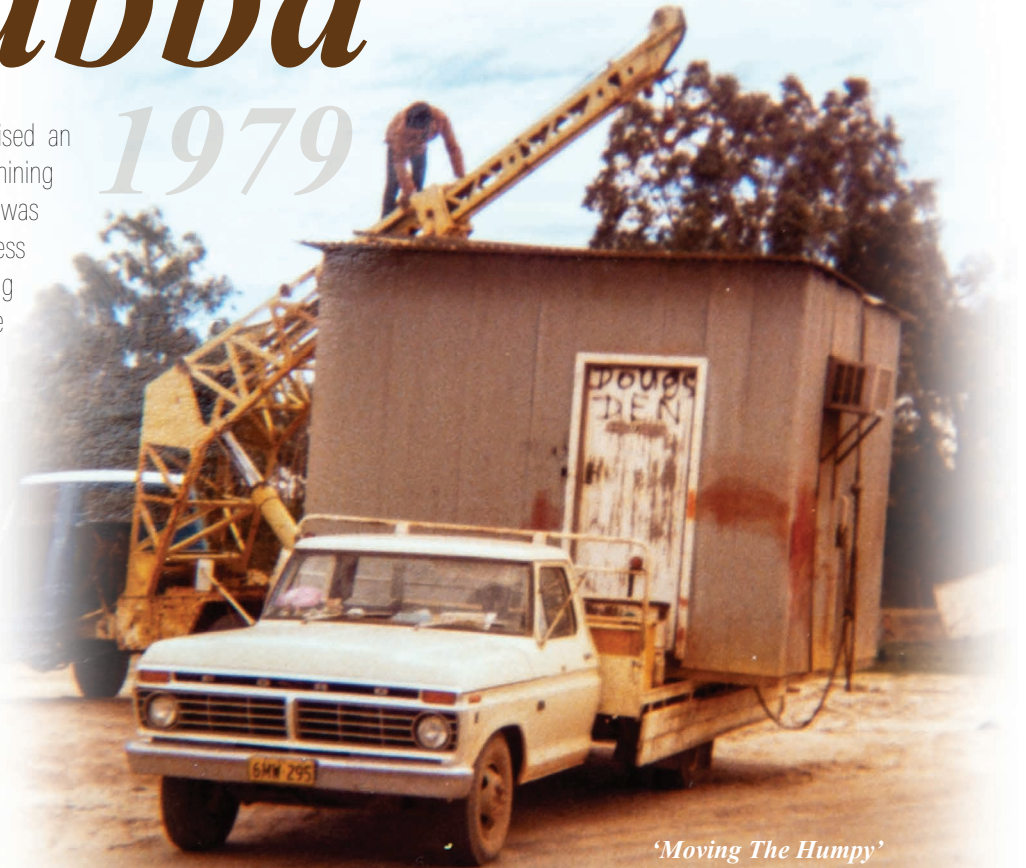
The story of Eneabba

When 23 year old Doug Brooks recognised an opportunity to hire out equipment to the mining industry in WA in 1979, he knew it was something he had to pursue. With no business experience but plenty of ambition, young Doug scrambled together every dollar he had to purchase two disassembled compressors, with the remainder of the bill being settled by bankcard.

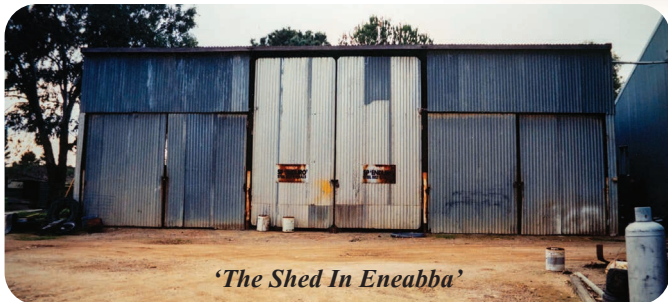
1979



At the time, Doug was working 12 hour days as a Fitter on Barrow Island, and he fixed the unserviceable compressors in his spare time. After a few months of paying off his debts, Doug then made the bold decision to leave his job as a Fitter and start his own hire business.



'Moving The Humpy'

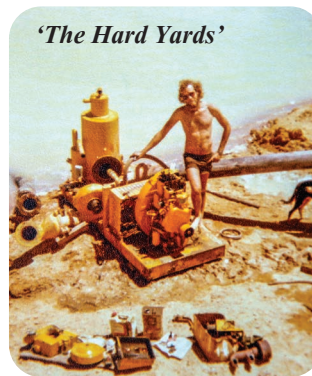


'The Shed In Eneabba'

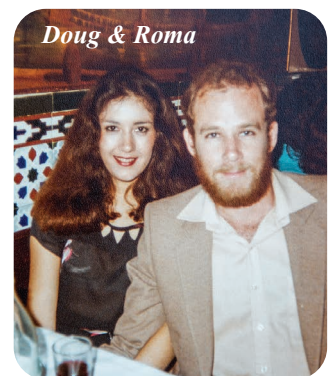
He opened 'Brooks Hire Service' and ran the business from a shed in the remote WA town of Eneabba. All the while Doug was living in a 'humpy' at the rear of the shed. There were many that warned him of the difficulty of starting a new business in a very competitive industry, but Doug was determined and it was only a matter of time before he was turning a profit on his compressors.

What started as two compressors on hire, soon turned into twelve pumps on hire, but the turning point came when Doug purchased his first piece of mobile equipment, an eight tonne JEC crane. The crane was purchased by tender in Perth and Doug didn't have the \$500 needed to freight the crane to Eneabba, so he drove it for 13 hours to get it there himself, with his trusty dog on board of course. This is a testament to the lengths that Doug would go, to ensure the success of Brooks Hire.

There are many great stories that came out of that shed in Eneabba. It was the foundation of Brooks Hire and the place where all of the 'hard yards' were done. Doug would work long hours during the week, and then drive to Perth on the weekend for parts. It was during one of these trips that he met his future wife, Roma.



'The Hard Yards'



Doug & Roma

By 1983, with the business continuing to grow, and Doug pursuing his life with Roma, Brooks Hire set up shop in Hogarth Street, Cannington. Then in 1990, they purchased their own yard in Canning Vale, where the Head Office is still located today. But it is that shed in Eneabba that will be remembered as the birth place of Brooks Hire Service.



From the MD...

To think that we were worried about not having enough content to cover quarterly magazines, how wrong we were. There has been too much going on to write about within our great company. It's been another season of expansion, procuring over 70 new machines within the last 3 months and 100's of attachments and tools. Special credit should be given to our Asset Manager, Vinny Yap for keeping up with all of the orders. We have also purchased and settled on two more properties (Port Augusta and Albany) which are now open.

A season not without its challenges though as our Victorian branch hires slow down in line with the Covid 19 outbreak. On the positive side, this has given Shane Buckleigh our Branch Manager in Melbourne time to get ahead of the game and line up almost all of the machines, serviced and ready to send. The recent opening of Mackay has been a great success with over 30 machines already operating within the region with great thanks to Josh Willett and our new Sales Representative Dwayne Unahi and the wider Queensland team supporting. When I visited all our North West branches it reconfirmed what we already knew. These branches are facing the busiest times with the most demanding clients and on top of that as always, the harshest weather conditions in Australia. I take my hat off to all our staff keeping the wheels from falling off in these areas. Our new Kalgoorlie facility is progressing well with the groundwork almost done. Thank you to John Silver with his hands-on approach to this project Also to Rhys Hebb and the team for keeping a steady workflow, enabling us to expand to a larger premise.

Brooks Transport continues to grow strong with the procurement of another 2 more Volvo Prime Movers and Drake/MTE Low loaders. Our Transport Manager, Shane Bradley has been doing an excellent job coordinating the steady stream of trucks in and out of the yard.

Supporting good causes is at the heart of Brooks Hire and our staff have all worked hard to place the company in a position to do so. It is a pleasure to showcase one of my favourite charities The Black Cockatoo Conservation Centre. Despite the intimidating size of the Black Cocky's beak these are the gentlest, most joyful creatures of any. If anyone would like a tour, please let us know.

How rewarding it is to see our machines on site doing what they are built to do and with one of our most valuable clients, Wormall Civil. The guys at Wormall have been dealing with us for several decades and run the most proficient civil earthworks company around. We are very appreciative of all our clients and other stakeholders and it has been a great privilege to be able to work with them and start featuring articles in our magazine.

It is hard to finish on any other note than to thank all our staff for their hard work, ensuring another very successful few months, you are all considered as part of the Family.

Stuart Brooks
Managing Director

BROOKS HIRE

CONTACT DETAILS

Brooks Hire Service Head Office
30 Coulton Way, Canning Vale WA 6155
Phone: 1300 276 657
Email: sales@brookshire.com.au
www.brookshire.com.au

The Eneabba is a Brooks Hire Service Pty Ltd publication. All photographs and written articles remain the property of Brooks Hire Service Pty Ltd. No reproduction in whole or in part of this publication is allowed without the permission of the Managing Director.

If you would like to make a submission, please email
marketing@brookshire.com.au

Digital Distribution 6,372 - Printed Copies 2,000

Contents

- 03 On Site With Wormall Civil**
We catch up with the Perth civil construction company.
- 05 Finnis Lithium Project**
Read all about Core Lithium's project in Darwin, NT.
- 07 WesTrac Delivers**
Cornerstones of a WesTrac Partnership.
- 09 The WA Mining Club**
A feature on Clubs & Associations helping our industry.
- 10 Position Partners Remote Solutions**
The technology bringing technical support to your job site
- 11 Kaarakin Conservation Centre**
Brooks Hire sends in the machines to help our wildlife.
- 13 Brooks Hire Digs Deep**
Our Ronald McDonald House Charities excavator has arrived.
- 14 It's A Wrap!**
The Brooks fleet get branded.
- 15 Brooks Hire Goes Green**
The advantage of solar energy.
- 16 Marketing News**
It's a Super Deal for everyone!
- 17 Road Trip To The Pilbara**
We visit our Newman, Port Hedland & Karratha branches.
- 19 New Machines**
Take a look at our latest arrivals.
- 21 Meet The Brooks Hire Team**
New staff members, old staff members & other staff news.
- 23 The Puzzler Page**
Relax with a cuppa and flex your brain.
- 25 Snap That**
Take a look at our staff photography competition entries.
- 26 Equipment Hire List**
View our entire fleet list with all the specifications.
- 33 Vale Nonno**
The Brooks family farewell their beloved Nonno.

On Site with Wormall Civil



Darryl Clarke (Site Supervisor, Wormall Civil), Stuart Brooks (Managing Director, Brooks Hire) and Mike Mulhall (Corporate Advisor, Wormall Civil) at Ambia Estate, Southern River. Developer: LWP Property Group

Civil engineering construction company Wormall Civil has been successfully delivering infrastructure projects across the Perth metropolitan and regional areas since 1984. We caught up with Mike Mulhall, Corporate Advisor to discuss Wormall Civil's current projects and what's in store in the future.

Can you list a number of Wormall Civil's current and recent projects and who your clients are on these projects?

Wormall Civil is very fortunate to have many loyal and key land developer clients providing us with a strong pipeline of civil construction works, in both the residential and industrial sectors; projects such as: Apsley Estate, Mandogalup for Qube Property Group; Vivente in Hammond Park for Richard Noble; The Hales in Forrestfield, Heron Park in Harrisdale and Dalyellup (South Bunbury) for Satterley Property Group; Golden Bay Estate and Movida Estate in Midvale for Peet; Kamara at Piara Waters, Solaris Estate at Forrestdale and Millars Landing Baldivis for Cedar Woods Properties; Glendalough Medium Density site for Stockland; Madox Piara Waters, Iluma Bennett Springs and Baldivis One71 for Mirvac; Trinity at Alkimos, Mahala Forrestdale and Banksia Grove for LWP Property Group; Witchcliffe Ecovillage near Margaret River for Sustainable Settlements/Perron Group; Kingston Estate Australind for Lester Group; Kemer-ton Industrial Park - (entry roads and associated infrastructure into the Albermarle Lithium Plant) for DevelopmentWA (formerly LandCorp); Casuarina Industrial Estate for Aigle Royal; Roe Highway Logistics Park in Kenwick and the upcoming Midland Brick redevelopment in Middle Swan for Linc Property to name a few.

What is the size of your current permanent work force?

Approximately 280 full time employees currently.

What do you see as your biggest challenges in the civil construction industry?

Firstly, safely and efficiently delivering all the lots we are contracted to complete for our land developer clients due to the current significantly increased demand, bought on by the very welcome Federal and State Government stimulus packages, primarily implemented to offset the negative economic impacts of the Covid-19 pandemic. Secondly, ensuring we maintain our business's ongoing viability and reputation for delivery during and post the stimulus packages period. The ability to deliver the outcomes our clients require, on program and on budget is critical to theirs and our own success. We rely on both organic resources i.e. our experienced and committed people as well as mechanical resources i.e. our own plant and equipment, which very importantly is also augmented by the availability of reliable and cost effective hire plant and equipment from Brooks Hire, who have supported us over many years. And lastly, staff retention. We are only as good as the workforce we employ. We are proud of the fact that we have a very loyal, durable and experienced workforce, with many employees in the 10, 15, 20 year plus categories across all levels, from the trenches up to and including senior management. Looking after our staff and retaining their services is paramount to our ongoing success. Being an employer of choice also helps in recruiting and retaining the right people, often with unsolicited approaches made to us.

What are the key differentiators that separate Wormald Civil from your competitors?

There are many, but first and foremost, whilst the company has grown exponentially over the years, we have not lost sight of the fact that we are still a family owned and operated company, founded on the core values and integrity that is expected of a family business that has operated continually since 1984.

A long serving, stable and loyal Senior Management Team, leading by example from the front. The six member Senior Management Team are also very visible to clients, consultants and other industry stakeholders by their site attendance and hands on involvement in the company's operations. We also attend many industry events, particularly those organised by peak industry body, the Urban Development Institute of Australia, Western Australian division, which the company also supports through its ongoing corporate membership, committee representation and sponsorship. Having all the in house capabilities to provide above and below ground civil infrastructure is also a primary differentiator. In recent years we have added traffic management capabilities, service locating, dewatering, boring and other key tasks to our in house service offering, making us more efficient and cost competitive.

Also having an in house, co-owned and co-located plastics and precast concrete manufacturing facility provides us with unique synergies and the ability to provide both off the shelf and bespoke civil infrastructure products for our highly valued clients' projects.

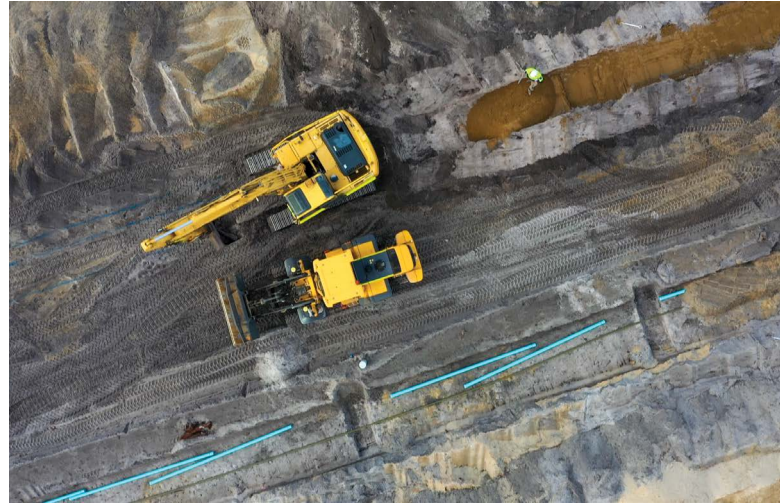
Lastly, as our Managing Director Shane Wormald points out on our corporate video, 'We are just easy to do business with.'

"...we have not lost sight of the fact that we are still a family owned and operated company..."

What do you think Wormald Civil will look like in 5 years time? Will the business have changed dramatically?

Good question and I'm glad you asked it, as it something that we in the Senior Management Team have embraced in our recently updated and ever evolving Business Plan.

Up until March this year we were very confident of where the business was placed and where it was heading. Then Covid-19 hit and the world was, and still is being turned upside down. One of the key planks of our Business Plan is to build in resilience and versatility so that we are able to quickly pivot to changing circumstances, whilst always remembering our core business attributes and skills, along with never forgetting our core client base that has got us to where we are today. Whilst industry diversification is considered an inevitable pathway for future growth and expansion, Wormald Civil will always be a major player in the residential and industrial land development civil construction sector. Geographic expansion has also been inevitable with our South West office and local workforce now consistently delivering projects across the south west. The company also operates across the entire state as client projects require.



You mentioned your Managing Director Shane Wormald previously; what can you tell us about Shane and his leadership and management style?

I personally have known Shane since the early 2000's when I worked for a competing civil engineering construction firm. We would often meet at industry functions, along with Shane's dad Ray. I was always taken by their respect for us as a competing company and as individuals, which was also replicated by myself and my colleagues back to them. Shane's highly developed problem solving skills and intellect were evident very early on. When he approached me to join Wormald Contracting, as it was known back in 2002, it was an easy decision to make. Having established his own separate and highly successful company, Smartstream Technology in 2005, he proved that he could succeed in his own right, independent of the family company. With his younger brother Craig stepping down from the Managing Director and sole proprietor role at Wormald Civil in 2017 after 12 very successful years at the helm, Shane was keen to return to the civil contracting arm of the family company in the role of Managing Director and sole proprietor and has further transformed the company into what it is today. Three years on, under Shane's corroborative and dynamic leadership style and backed up by a strong and committed Senior Management team, Wormald Civil has grown even more and is now universally regarded as the number one civil engineering construction company operating within the WA land development sector. As our company tag line says, 'Together We Deliver.' Whilst Shane has driven this growth from the top down, he has never ever compromised safety for productivity and is committed to ensuring that all our workers return home safely at the end of each days work.



INDUSTRY SPOTLIGHT

Lithium Mining For Renewable Energy



Australia is the world's largest lithium producing country and is host to the world's second largest supply of lithium reserves. This month we caught up with Core Lithium to discuss their Finnis Lithium Project in the Northern Territory.

Advanced Australian lithium developer, Core Lithium (ASX: CXO), plans to open the Northern Territory's first lithium mine, providing the best to-market logistics chain of any Australian lithium operation. Core's Finnis Lithium Project lies within 25km of port, power station, gas, rail and one hour by sealed road to Darwin Port – our nearest port to Asia.

Construction on the mine and processing facility will start next year, and is expected to create more than 250 jobs for the Territory, with a minimum projected mine life of seven years.

Following detailed engineering and design of the project's infrastructure – which will include open pit and underground operations – various contracts have been awarded to oversee the work. Lucas TCS has been selected as the preferred mining contractor, Primero the preferred processing plant construction company and Qube Logistics is Core's haulage and ship loading contractor.





Why lithium? Everyone wants lithium.

It's the core element in batteries used to power electric vehicles, and The Finnis Project boasts world-class, high-grade and high-quality lithium suitable for this use and other renewable energy purposes.

So where will all this lithium end up? The short answer: all over the globe.

All continents of the world are building up their lithium production and/or processing capabilities and while the estimates around the speed of adoption of electric vehicles varies considerably, it is expected lithium demand will outstrip current identified supply by 2030.

“It’s the core element in batteries used to power electric vehicles...”



Lithium goes through a number of processing stages from being extracted in spodumene rock and undergoing further refinement before it's used in the manufacturing of batteries. Ongoing R&D by battery companies and the likes of Tesla are constantly innovating to create longer life batteries and close the production loop with re-cycling initiatives.



The European Union has just approved its biggest green stimulus in history with a USD \$572B plan, which was great news for Core – having recently become a member of the European Battery Alliance and signing its first European Offtake MOU with Geneva-based Transamine for 50,000 t/pa. It also has a binding offtake for 75,000 t/pa with one of China's largest lithium producers, Sichuan Yuhua.

More information on Core Lithium's activities can be found at www.corelithium.com.au

WesTrac Delivers



Lenore Brooks - Brooks Hire, Hire Manager,
Vinny Yap - Brooks Hire Asset Manager, and
Frank Andrich - WesTrac Account Manager

Inventory, Service & Quality - Cornerstones of a WesTrac Partnership

For over 30 years, WesTrac has provided customers in the mining and construction industries with equipment solutions across WA, NSW and the ACT. Well known for quality earthmoving machinery, WesTrac, one of the largest authorised Caterpillar® dealers globally has provided support to Brooks Hire throughout their years in operation.

Priding themselves on delivering the highest level of service to customers, WesTrac is committed to providing a range of premium products to meet the needs of Brooks Hire's diverse customer base.

According to Lenore Brooks, Hire Manager of Brooks Hire, the engagement has grown into a successful long-term partnership due to the quality of service and size of WesTrac's inventory.

"In our industry, having a partner with a comprehensive range of stock, as well as a consistent record of delivering quality machinery when and where we need it, is invaluable," said Lenore.

"Whether our clients require a compact skid steer for minor works, or a motor grader for a larger application on a major road project or mine site, having confidence in machine quality and reliability is crucial to our operation."

WesTrac Account Manager Frank Andrich oversees the ongoing partnership with Brooks Hire. "Ensuring we adapt and grow to meet our clients' needs is a key objective for us. From the moment a purchase is made, right through to any service or parts requirements a machine may need," said Frank.

"As we continuously expand our scope of Cat products and technologies, we can help customers improve productivity, safety and increase uptime on their jobsite."

"In the past 18 months we've seen the team at Brooks Hire have an increased demand for a range of Cat machines including skid steers, wheel loaders, motor graders, articulated trucks and rollers," said Frank.

The latest Cat machines to join the Brooks Hire fleet will be two brand new motor graders due to be delivered in the coming weeks. The 140 (12M) grader includes maximum operator comfort and safety with a fuel efficient C7 engine and advanced hydraulics to ensure precision and efficiency on grading projects.

In addition to the new graders, Brooks Hire Service has also placed an order with WesTrac for fourteen brand new Cat rollers which will start arriving from October 2020.

We asked WesTrac to tell us about the technology that Cat products feature, that sets them apart from their competitors. Here's what they told us;

PAYLOAD

Cat PAYLOAD technologies provide on-the-go load weighing to assist operators with hitting precise load targets every time, helping to reduce load times, optimize loading efficiency and increase jobsite productivity. Operators can track daily productivity from the cab, with quick access to information such as truck target weights, loads and cycle counts, material movement and daily totals. When combined with Cat LINK technologies, detailed data can be accessed remotely to manage overall operations and keep production targets on track.

GRADE

Cat GRADE technologies combine digital design data, in-cab guidance, and automatic controls to enhance grading accuracy, reduce rework, and lower costs related to production earthmoving and rough, fine and finish grade applications.

Whether you're working on simple planes and slopes or complex contour designs, GRADE technologies enable you to boost grading efficiency by as much as 50%, helping you get more work done—in less time and at a lower cost—than ever before.

COMPACT

Cat® COMPACT technologies combine advanced compaction measurement, in-cab guidance and reporting capabilities to help you consistently meet compaction targets faster, more uniformly, and in fewer passes—saving on fuel and reducing rework and material costs in both soil and asphalt applications.

COMMAND

Cat® Command enhances safety in hazardous work environments, making work more comfortable and more precise – driving productivity up and costs down. Cat Command is scalable and flexible:

- The Command Console allows the user to work safely and comfortably away from the machine, while remaining on-site and in direct visual contact with Line of Sight (LOS) technology. It's ideal for short-term and emergency use and requires no onsite communications infrastructure.

- The Command Station enables the user to work remotely in a comfortable, seated "virtual cab" with familiar controls and machine displays. Located in a command center onsite or many miles away, this Non-Line of Sight (NLOS) technology also allows users to work for longer periods of time due to an improved working environment.

- With the semi-autonomous Command for Compaction system, the user gives compaction inputs and remains in the cab to monitor progress while the system executes the compaction process. Today, Cat Command is available on a variety of construction equipment, including Cat dozers, excavators, wheel loaders, compactors and skid steer loaders.

VISIONLINK

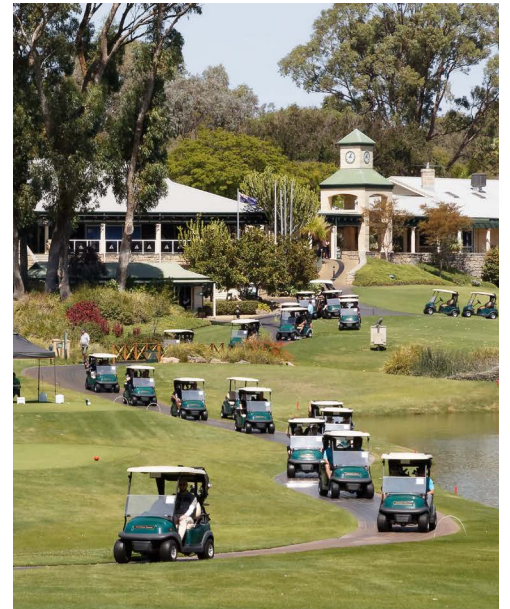
Vision Link is a comprehensive remote monitoring and asset management solution, with remarkably intuitive web interfaces that transform data from a customer's entire fleet of equipment into the essential information required to boost productivity, reduce costs and manage risks.

Brooks Hire is really excited by the rate at which Cat's construction technology is evolving. Ultimately this innovation improves productivity for our customers which is fantastic. Our strong relationship with WesTrac means that we can continue to supply the most technologically advanced equipment to our clients. It will be interesting to see how future technology will continue to transform the industry.



CLUBS & ASSOCIATIONS FEATURE

The WA Mining Club



The West Australian Mining Club (WAMC) was formed in 1972 by a group of dedicated Perth based industry professionals who recognised the value of meeting regularly to network and discuss industry issues.

This original committee envisioned a social organisation for people involved in the mining industry to meet in a forum of informal conversation to discuss industry trends.

This vision forged a tradition that continues today, with the WA Mining Club monthly luncheon, which takes place on the last Thursday of each month, where industry representatives can mix socially and discuss topics of interest. During the 1980s and 1990s, membership hovered around 200, but today membership has soared, now consisting of up to 800 industry representatives. Due to the WA Mining Clubs growth and positive influence in the sector, high profile speakers from across the country regard the events as a "must attend" on their calendar.

The WA Mining Club contributes to the advancement of the Western Australian mining industry through promoting and encouraging general and technical information as well as knowledge sharing. The club does this through:

- Minesite, an annual publication showcasing the work of the WA Mining Club and its members and highlighting issues relevant to the industry;
- Our monthly industry luncheons, regular networking and social events;
- Education initiatives that support the future leadership of the industry;
- Fundraising for our charity partner St John.

The WA Mining Club members represent a wide cross section of the industry, where our members showcase and share their work, innovations and breakthroughs to their peers.

Many years ago, the WA Mining Club event program broadened to include the Annual Gala Ball, President's Golf Day and the remembrance of fellow miners who have lost their lives at the annual St Barbara's Day luncheon. The WA Mining Club also financially supports the advancement of the mining community, by providing:

- Scholarships to university students who we envisage will be future leaders in our industry,
- University prizes to those achieving excellence in their mining relevant studies; and
- An annual donation to charities such as St John, to assist in helping the communities in which many of our members operate and live.

The WA Mining Club also provide members with relevant industry information. This includes topical issues and industry trends, particularly through its publications and guest speaker presentations.

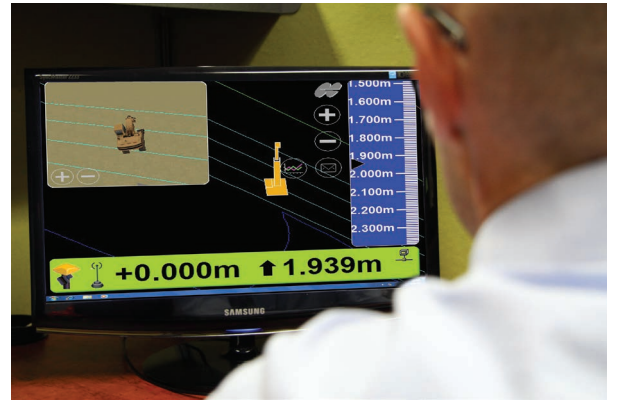
From humble beginnings, the WA Mining Club has built a reputation as one of the most effective networking organisations in Western Australia.

Our members include leaders from mining companies, large and small suppliers to the industry and specialists in many fields including geologists, engineers, metallurgists, accountants, economists, lawyers, journalists, government representatives, university researchers, technical representatives, drilling company representatives, suppliers and more. The Club always welcomes new members.

TECHNOLOGY REPORT

Remote solutions

Brooks Hire has been working with Position Partners to bring technical support onto your job site.



Karl Longstaff - Field Service Technician, Position Partners,
Jack Eyo - Parts Manager, Brooks Hire, and
Clay Grono - Construction Sales Manager, Position Partners

Position Partners technicians are experts in their field and with the remote service capabilities enabled with Tokara, their technicians can solve most technical issues that arise without the need to visit the machine(s) in person, saving you time and keeping you within your budgets. Tokara is an Australian-designed telematics solution created specifically to improve efficiency and productivity for earthworks and civil construction projects. The system connects your machines to the office, provides access to technical support, and links you to any GNSS/GPS network required for the job.

Managers and surveyors can also remotely update design files on all machines across multiple projects, without the need to visit each machine in person. "Tokara can really help you increase productivity and reduce downtime on site. If you're having issues with your machine(s) on site, Tokara gives you and Position Partners full diagnostic access. If the support team can't resolve the issue over the phone and we need to get out with field service we can be a lot more efficient knowing what the issue is to reduce time onsite" said Mr Hayden Paul, Major Accounts Manager Construction, Position Partners. Tokara offers project managers, surveyors and other key stakeholders the ability to login to a user-friendly web portal to track and manage their machines and survey instruments, or send design updates to the field without leaving the office.

"We, at Position Partners, have always prioritised timely and efficient support because we know that if your machine control system isn't working then you're not making money," said Aaron Krenske, Networking Solutions Manager at Position Partners. "This led us to the development of Tokara, which enables our technicians to solve most problems without even visiting the site!"

Tokara is designed to help you get the most from your machine control and survey technology with fast, comprehensive support when you need it and also makes training your staff on the machine and equipment very simple and enables you to keep working on site while working on any issues or problems remotely.

"Tokara assists in ongoing training, so when you have access to Tokara on a machine, the operator

can ring up our support team and our guys can remotely log in, talk the operator through what they're doing. This can make the operator feel a lot more comfortable with using the equipment" said Mr Paul. "It's part of that ongoing training and backing up what we sell." Position Partners has been able to develop its Tokara suite through the unique set of skills and expertise built up by the company over many years.

"Our unique blend of experience and industry knowledge means that we are ideally placed to deliver a single industry-wide solution: we understand the business, we understand our customers, and we understand what they want to achieve," Mr Krenske added. "Tokara has been developed in Australia, using Australian skills and programmers, based around customer requirements, and has been extensively tested with contractors and end-users throughout the country so that we know it works in our harsh environment and with our often-challenging telecommunications networks." The service and support offered by Position Partners in conjunction with the remote support system is what makes Tokara such a powerful solution for our customers. "Anyone can sell a system to a customer, but the problem is you need to have that back up and support and I think Position Partners is really great at that," said Mr Paul. "We pride ourselves on that service and support."

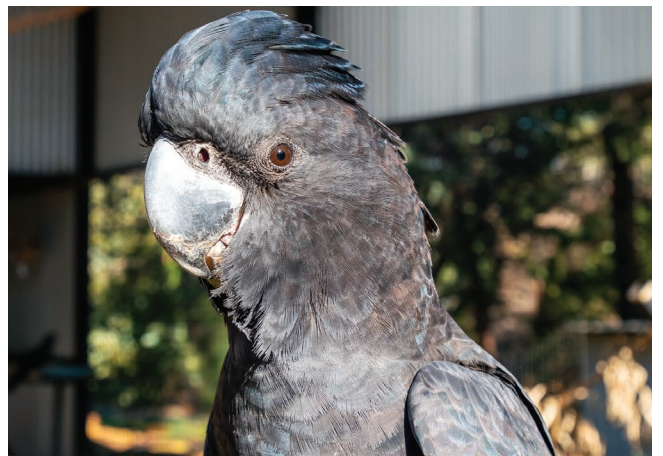


Kaarakin Black Cockatoo Conservation Centre

On Friday 5th June, Brooks Hire lent our brand new Caterpillar 962M Loader to the Kaarakin Black Cockatoo Conservation Centre for some maintenance work.

Kaarakin Black Cockatoo Conservation Centre is a not-for-profit conservation organisation with a focus on saving and rehabilitating sick and injured Western Australian native wild black cockatoos. The centre rescues and rehabilitates the cockatoos with a view to their re-release to native flocks, as well as to restore critical black cockatoo habitats and to educate the public about these iconic native birds.

“We rescue wild black cockatoos in distress – often having been shot, hit by cars, fallen out of a nest or attacked by bees/cats or other birds – and rehabilitate them in our aviaries on site in the Perth Hills,” said Glenn Dewhurst from the centre. “Sadly, many of the birds we rescue do not survive. The ones that do make it through their initial veterinary treatment at Perth Zoo come back to us for intensive care by our dedicated volunteers.”



“...often having been shot, hit by cars, fallen out of a nest or attacked by bees/cats or other birds...”

Our HR Manager, Jade Moodie went along to the centre with Stuart Brooks, where they got to see the rehabilitation process first hand and make some feathery friends.

It's not just birds being taken care of at the centre. Glenn has also been instrumental in preserving the rare breed of Bogong Dingoes.

Bogong dingoes are believed to be extinct in the wild and only a few remain in captivity. Kaarakin has been successful in breeding a litter of five Bogong dingoes. Other types of dingoes at the centre include Pilbara dingoes and Alpine dingoes.



Brooks Hire are happy to lend our machinery free of charge when it's being used for such a worthy cause. The loader was used to improve and maintain the enclosures for the animals.



COMMUNITY NEWS

Brooks Hire Digs Deep!



Our Ronald McDonald House Charities (RMHC WA) Charity Excavator has arrived.



The paintwork has begun on EX297, our brand new Komatsu PC200LC-8 which we purchased specifically to be used as a charity machine for Ronald McDonald House Charities WA (RMHC WA).

Earlier this year, Brooks Hire announced that we had made a commitment to Ronald McDonald House Charities WA to help raise funds for the families of sick children. We have agreed to donate \$2 for every hour that this machine is on hire.

When children get sick, it is essential that they have family nearby while they receive medical treatment. For families that live in remote locations, this can be extremely difficult. Ronald McDonald House Charities WA try to relieve that burden by providing families with accommodation and essential care while their child is being treated. With the Covid-19 pandemic causing many of RMHC WA's fund raising events to be cancelled, this is one way that Brooks Hire can help support the organisation.

We took delivery of our new excavator in July and have been working on decorating the digger to the RMHC WA colour theme. We'd like to make a special mention of RISE and Sherwin-Williams who very generously donated the paint for this project. We are now waiting on the colourful decals to arrive so we can complete the makeover. It will certainly be an eye catching piece of equipment when completed.



This particular excavator is currently located at our Bunbury branch in Western Australia. It will be used for hire jobs all over the South West of WA so if you need a 20 tonne excavator, call Brooks Hire and ask for the 'big blue digger'. You can rest assured knowing that you'll be helping the families of sick children in Western Australia. Brooks Hire hope to extend our program to Queensland, New South Wales, Victoria, South Australia, and the Northern Territory in the future. You never know, perhaps you'll see a 'big blue dump truck' or a 'big blue loader' somewhere near you soon.



It's A Wrap!

The Brooks Fleet Get Branded

After having both of our brand new Volvo Prime Movers wrapped with the Brooks Transport branding, we decided to update some of our other vehicles with the new graphics. Our Hino Tilt Tray (HV025) was the first to receive a makeover, followed by our Scania Prime Mover (HV033). We have a third brand new Volvo Prime Mover expected to arrive over the coming months. This heavy vehicle will also join the Brooks Transport fleet with matching branding.

To compliment our heavy vehicles, and strengthen the 'Brooks' brand, we have also had some of our light vehicles wrapped in a similar design. We currently have two Dodge RAMs sporting the new look decals. We've received a huge amount of positive feedback from the public regarding the new design. The matching decals give our fleet a united front and it's fair to say that we are 'wrapped' with the results.



Brooks Hire Goes Green



Solar panels being installed at our Toowoomba branch.

Brooks Hire has been progressively installing solar panels at our branches around the nation. After installing solar panels at our Perth branch last year, we realised that it was a small step that we could take to create a sustainable power supply and reduce our carbon footprint.

Solar power is a clean source of energy. No greenhouse gas emissions are released into the atmosphere when you use solar panels to create electricity. In addition, it's also a cost effective way to run our branches as we generally use most of our power during the day.

Our Toowoomba Branch had a 30kw system installed during August, and our next branch to receive an install will be Brisbane. We expect to have solar panels completed at our branches in Dalby, Mackay, Sydney, Adelaide and Port Augusta before the end of 2020.

Marketing

Monthly Super Deals

You may have noticed that Brooks Hire has initiated a monthly 'Super Deal' promotion which is advertised in our fortnightly digital newsletter.

For 17 years now, Brooks Hire has been giving away an annual prize of a Harley Davidson motorcycle to one of our lucky clients. The idea behind the 'Super Deal' promotion is to reward more of our customers on a more regular basis. All customers who hire a piece of equipment during the month go in the draw to win that month's 'Super Deal' prize.

We've seen some pretty happy customers this year and we look forward to keeping the good vibes flowing.



MCS Civil, Sydney NSW won a Shimano Beastmaster Rod & Reel Combo



Advance Civil Engineering, Darwin NT won a Husky Coca Cola Bar Fridge



BWC Contracting, Brisbane QLD won an Engel Fridge / Freezer



GVC Earthmoving, Kalgoorlie WA won a Weber Q BBQ



Wormall Civil, Perth WA won a 55" 4K Smart TV



Carlton Contracting, Perth WA won a Bottle of Johnnie Walker Blue Label Whiskey and a set of Brooks Hire Whiskey Glasses

Road Trip To The Pilbara



We visit Newman, Port Hedland and Karratha



It was a clear crisp winters morning on Wednesday 10th June when our Managing Director, Stuart Brooks along with our Western Region Service Manager, Steve Drage set off from our Canning Vale branch in Water Truck number 105. Destination - Newman, Port Hedland and Karratha.

The water truck needed to be transported to our Karratha branch so the guys decided it would be a good opportunity to drive it up there themselves and touch base with our teams in the Pilbara on a personal level. Visiting the nationwide branches is something that Doug Brooks usually does on a regular basis, however with Coronavirus restrictions in place Stuart and Steve's tour was kept within the WA borders.

It was an early start to the day as they had a massive 1200km drive ahead of them to the nearest branch, Newman. They were barely on the road for half an hour when our Parts Manager, Jack Eyo gave them a call. There had been a breakdown on a roller in Newman and he needed the guys to take some parts up there to fix it.

Stuart and Steve took it in their stride and came back to base to collect the parts. After all, if a machine needs to be repaired, Brooks Hire are going to make it happen.

Travelling was slow going with breaks at every service station to fuel up the truck. Along the way they also made a stop at Cue. Also known as 'The Queen of the Murchison', Cue is a very small rural town in the Mid West region of WA. At last count, the population of this tiny town was just 178 people.

They finally arrived in Newman at about 10pm that evening.



The guys spent three days at the Newman branch before hitting the road for Port Hedland, just a short 450 kilometre drive down the road. It's fair to say that the stretch of landscape through Karijini is spectacular and unique. Australia has such a vast array of landscapes but the red earth and brilliant blue skies of the Pilbara is very special indeed.

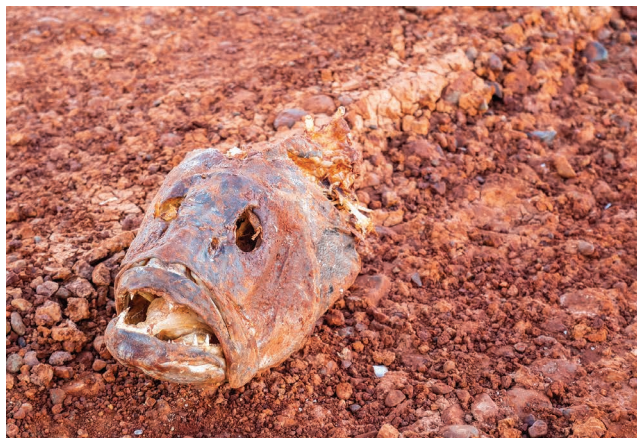
After another three days in Port Hedland, Stuart and Steve hit the road again. Karratha is only a couple of hours west of Port Hedland so it was their easiest drive yet. That night they all enjoyed a pub meal and a round of beers (or several) with the Karratha team.

With the water truck at its final destination, and having been on the road for nearly two weeks, Stuart and Steve finally started their trip back to Perth. They were doing the return leg in 'Snowy,' a 2004 Landcruiser 100 Series which happened to be the Brooks' old family car.

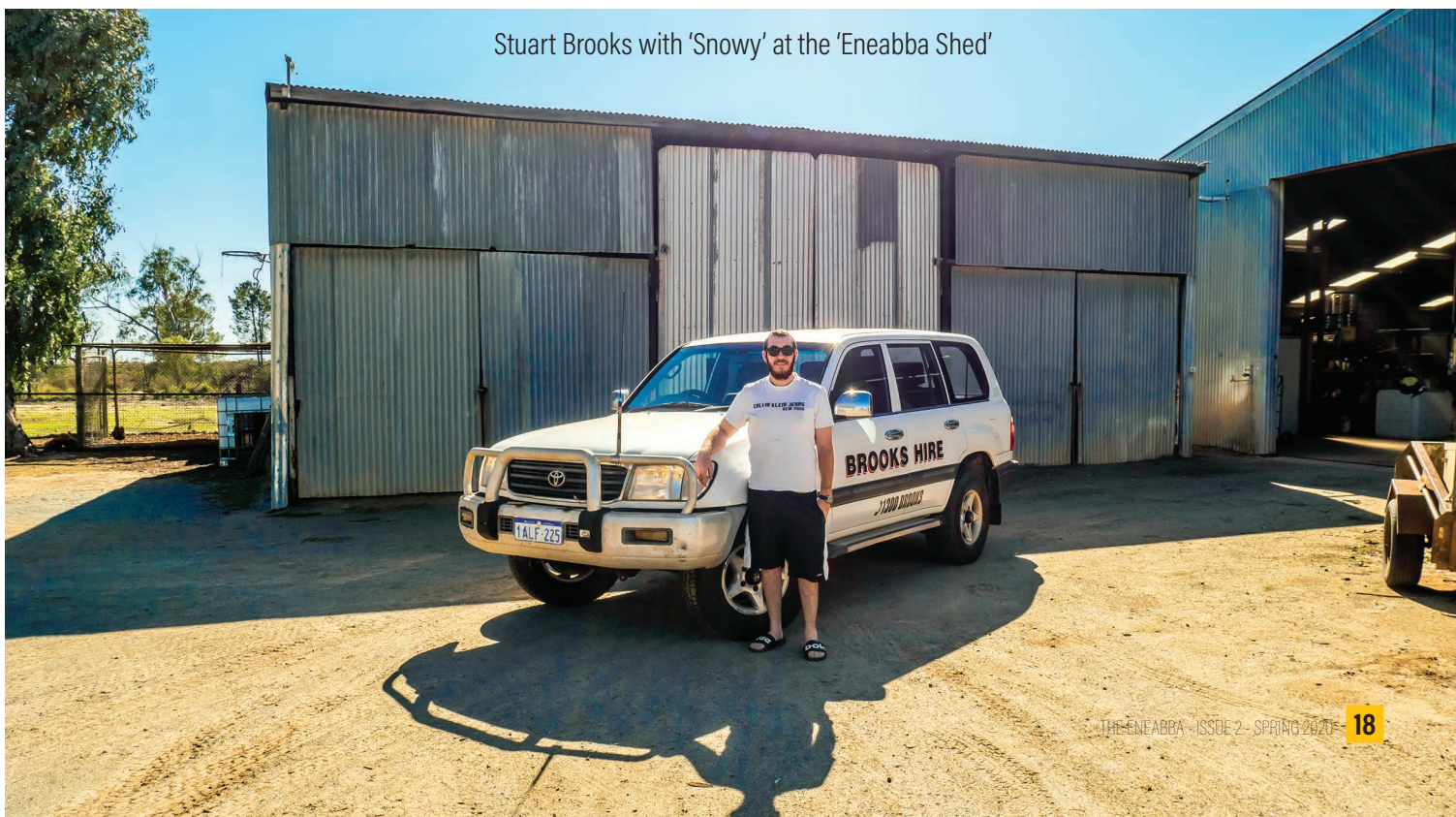
Passing red plains with free roaming Brahman Cattle, the dried up carcasses of Mangrove Jack in the Fortescue River, and massive termite mounds, the only place left to stop was the shed in Eneabba. This shed is where Brooks Hire Service was first founded and it's become a ritual to stop there whenever the Brooks family is passing. Stuart didn't disappoint, stopping to take a snap with good old 'Snowy.' Then it was homeward bound.



The Brooks Hire Karratha Team



Stuart Brooks with 'Snowy' at the 'Eneabba Shed'



New Machines

The Brooks Hire Fleet

At Brooks Hire, we are constantly updating our fleet so that we can supply our customers with the latest model, low hour machines when they need them. All of our equipment is maintained within OEM guidelines. This is just some of the equipment that we've purchased this quarter.

Caterpillar D6N Dozer D006

This Dozer was purchased in Brisbane. It features a 6 way pat blade, multi shank ripper, reverse camera, and airconditioning. This machine has been sent down to our Melbourne branch for work.



Caterpillar D6T XL Dozer D007

The larger of the two, this Dozer was also purchased in Brisbane. It features a SU blade and tilt, multi shank ripper, reverse camera, and airconditioning. This dozer will be located in Brisbane.



Komatsu PC228US Excavator EX307

This brand new zero swing excavator was delivered to our Sydney branch in July. It went straight out on a 4 week hire.



Caterpillar 308 Excavator EX290

The Cat 308 Mini Excavator weighs in at 8 tonnes and features a sealed and pressurised cab.



Isuzu FVZ 260-300 Tippers T041 & T042

These two Tipper Trucks were delivered to our Perth yard. They were purchased for a customer in the Pilbara.



Caterpillar 140 Grader G057

Arriving at our Perth yard in July, this popular model grader is available in the South West of Western Australia.



Caterpillar CS74B Roller R143

This brand new 16 tonne smooth drum roller is located in our Perth yard.



Caterpillar 962M Loader L233

This front end loader came with a 3.6m³ bucket and was only in the yard for a short time before going out on hire.



Caterpillar 980M Loader L237

This big loader was purchased specifically upon customer request and was put straight to work in the Pilbara.

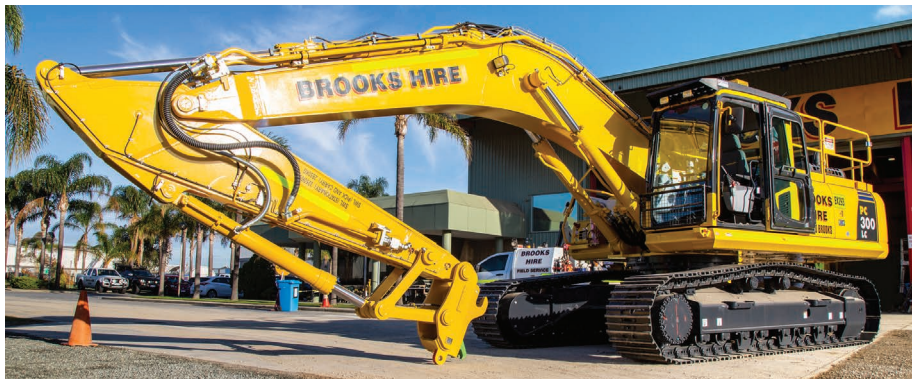


Atlas Copco H5 Light Towers

LT003 & LT004 We've just purchased two of these light towers in Perth specifically upon client request.

Komatsu PC300LC-8M0 Crawler Excavator EX293

This shiny new excavator came with three different buckets, a trenching bucket with a 0.53m³ capacity, a GP with a 1.61m³ capacity, and a slope finishing bucket with a 2.20m³ capacity. It arrived at our Perth yard in late June and was sent out on its first hire job less than a week later.



Caterpillar 301.8 Excavators EX302 & EX309

These mini excavators weigh in at just 1.8 tonnes and are the smallest of their kind to have a completely enclosed, pressurised cab. They even come with their own little trailer. We've purchased three of these mini excavators this year. The first is located in Perth. These two are located in Melbourne and Brisbane.



Hyster H5.0FT Forklift FL018

This Hyster Forklift joins the Perth fleet. It's diesel powered and features a lifting height of 4.145m and a lifting capacity of 5 tonnes. This particular machine was purchased upon customer request and went straight out on long term hire.



Isuzu FVZ 260-300 Water Truck WT127

This 6x4 Isuzu truck has been fitted with a 14,000L ORH tank. It arrived at our Perth yard in mid July.



Caterpillar 950M Loader L232

We had a fire suppression system installed on this Cat loader upon delivery. It's located at our Perth branch.



Komatsu PC228US-11 Excavator EX308

This 'zero swing' excavator is an extremely popular model due to its tight tail swing. This one is a part of the Perth fleet.



Caterpillar 140 Graders G055 & G056

We had 2 of these graders delivered to our Brisbane yard. One of them was sent up to the Mackay region.



Caterpillar CP76B Padfoot Rollers

R40 & R41 We had two of these 18 tonne padfoot rollers delivered to our Perth yard recently.



Komatsu HM400-3 Dump Truck ADT102

Another new machine for Brisbane arrived in the form of this 40 tonne dump truck. It was sent straight out on hire.



Road West 24t Side Tipper SIT007

This 24 tonne Side Tipper was recently delivered to our Brisbane branch and has been generating a lot of interest.

Welcome Aboard

Dwayne Unahi

What was your first job:

Paper Boy

What is your role at Brooks Hire:

Sales Rep, Queensland

What achievement in life are you most proud of:

When my daughter was born, I discovered what love really was when I held her for the first time.



How would you describe yourself in 3 words: This is a hard one as I can only have 3, maybe I can hyphenate the words so I get more in... boisterous, loyal, direct, nosey, confident, versatile, motivated, driven, assertive and comedic. That's three isn't it???

Where would we find you on the weekends: I have my daughter week on / off so the weekends I have her you could find me doing arts and crafts, getting my finger and toe nails painted and daddy daughter "coffee" dates or just hanging out with her. Weekend off I will be riding either my bike or ski and relaxing with friends.

If you could invite anybody to dinner (dead or alive), who would it be: Michael Jordan and Nelson Mandela

You're going to a Super Hero party, who do you dress up as: Any that wears spandex as their outfit

Favourite type of cake: Chocolate for sure closely followed by banana.

What song best sums up your life: If you were to ask my daughter she would tell you that our favourite song is Roar by Katie Perry, that seems to be on repeat whenever she is in charge of the music.

Ryan Schirripa

What was your first job: Autopro

What is your role at Brooks Hire:

Junior Trade Assistant

What achievement in life are you most proud of:

Working for Brooks

How would you describe yourself in 3 words:

Motivated, Male, Teenager

Where would we find you on the weekends:

Rowing and hanging with my mates.

If you could invite anybody to dinner (dead or alive), who would it be: My best mate

You're going to a Super Hero party, who do you dress up as: Invisible Man (don't need to dress up, or turn up)

Favourite type of cake: Ice Cream

What song best sums up your life: Castles In The Sand, Jimi Hendrix



Jason Brennan

What was your first job:

Groundskeeper

What is your role at Brooks Hire:

Sales Rep, Adelaide SA

What achievement in life are you most proud of:

My ability to adapt to different situations, people, and environments. Having continually moved around Australia due to my dad's work, I quickly learned how to make friends. 13 Different schools will do that to you. I take that same attitude into life. Whether it's before I go up on stage to perform or starting a new job, I'm going to sink or swim no matter what, so I might as well give it a go and see what happens.

How would you describe yourself in 3 words:

Confident, Opinionated, Conversation starter

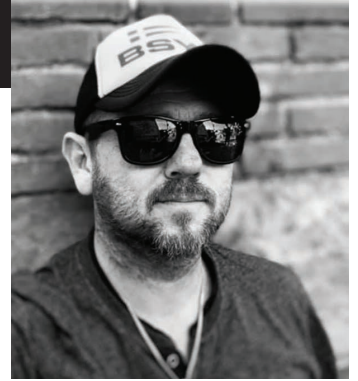
Where would we find you on the weekends: Either coaching AFL footy, surfing, camping or playing my guitar

If you could invite anybody to dinner (dead or alive), who would it be: My dad (RIP)

You're going to a Super Hero party, who do you dress up as: Deadpool or Ironman

Favourite type of cake: How can you go past Chocolate Cake

What song best sums up your life: All my Life - Foo Fighters



John Saqing

What was your first job:

My first job was a moulding machine operator before I become an Industrial Painter.

What is your role at Brooks Hire:

Industrial Painter / Panel Beater - Newman

What achievement in life are you most proud of: My greatest achievement so far is having my family with me here in Australia and providing them all the things they need.

How would you describe yourself in 3 words:

Hard worker, Reliable, Honest

Where would we find you on the weekends:

Just with my wife and kids. Either home or somewhere else.

You're going to a Super Hero party, who do you dress up as: Wolverine

Favourite type of cake: Chocolate Mud Cake

What song best sums up your life: Any Christian song



Jordan Skinner

What was your first job: Air-conditioning Trade Assistant

What is your role at Brooks Hire: Trade Assistant - Perth

What achievement in life are you most proud of: This one time, I rescued a koala, I'm driving to the vet, and he attacked me. It was like I was in the movie "The Revenant" when Dicaprio gets attacked by the bear. Anyway, I don't know if you've ever driven a car whilst been mauled by a koala, but we somehow both made it safely to the vet. Crazy night hey.

How would you describe yourself in 3 words: Observant, Friendly and Easy

Where would we find you on the weekends: Surfing, gardening and going out

If you could invite anybody to dinner (dead or alive), who would it be: Anthony Hopkins or Kate Beckinsale

You're going to a Super Hero party, who do you dress up as: Probably Steve Irwin, you know dressed up in khakis with a plastic stingray through my chest.

Favourite type of cake: Marble Cheesecake

What song best sums up your life: Skinnylove by Birdy



Spotlight On



Jack Eyo

Jack joined the Brooks Hire team at our Head Office in Canning Vale back in 2013 as a Parts Interpreter. Through hard work and dedication, he has worked his way up to Parts Manager. Most of the time, Jack is fairly quiet and reserved, but you should see him let loose on the dance floor!

What was your first job: Kitchen Boy at Maccas

What is your role at Brooks Hire: Parts Manager - Perth

What achievement in life are you most proud of: Did a 15km hike with a girl who only saw me as a very good friend.

How would you describe yourself in 3 words: Patient, Diplomatic and Considerate

Where would we find you on the weekends: "Food" is the key word. Catch me if you are lucky at Dumplings restaurants, Korean BBQ, Japanese restaurants, burger shops & bubble tea places.

If you could invite anybody to dinner (dead or alive), who would it be: Emma Watson

You're going to a Super Hero party, who do you dress up as: Kick-ass

Favourite type of cake? Not a cake person but I'll eat a slice of Caramel Mud Cake anytime, any day.

What song best sums up your life: Arnold, by Luke Million

Michelle Van Der Walle

What was your first job: Pizza Hut delivery driver (exhilarating, I know!)

What is your role at Brooks Hire: Vehicle Detailer - Adelaide

What achievement in life are you most proud of: Becoming the State Champion in Downhill Mountain Bike Riding in 2018

How would you describe yourself in 3 words: Adventurous, Outgoing & Sarcastic

Where would we find you on the weekends: Riding the bike on the trails!

If you could invite anybody to dinner (dead or alive), who would it be: Youtuber, Daz Games, so we can talk about memes and video games all night.

You're going to a Super Hero party, who do you dress up as: Harley Quinn!

Favourite type of cake: Any type of cake is good cake.

What song best sums up your life: Absolutely no clue. Haha.



The Puzzler Page



Spot the Difference

There are 10 differences between the photos below. See if you can find them all.



Word Solver

Find the 9 letter word using the letters in the grid, then try to make as many other words as you can. Words must be a minimum of 4 letters and must contain the middle letter. No proper nouns or plurals.

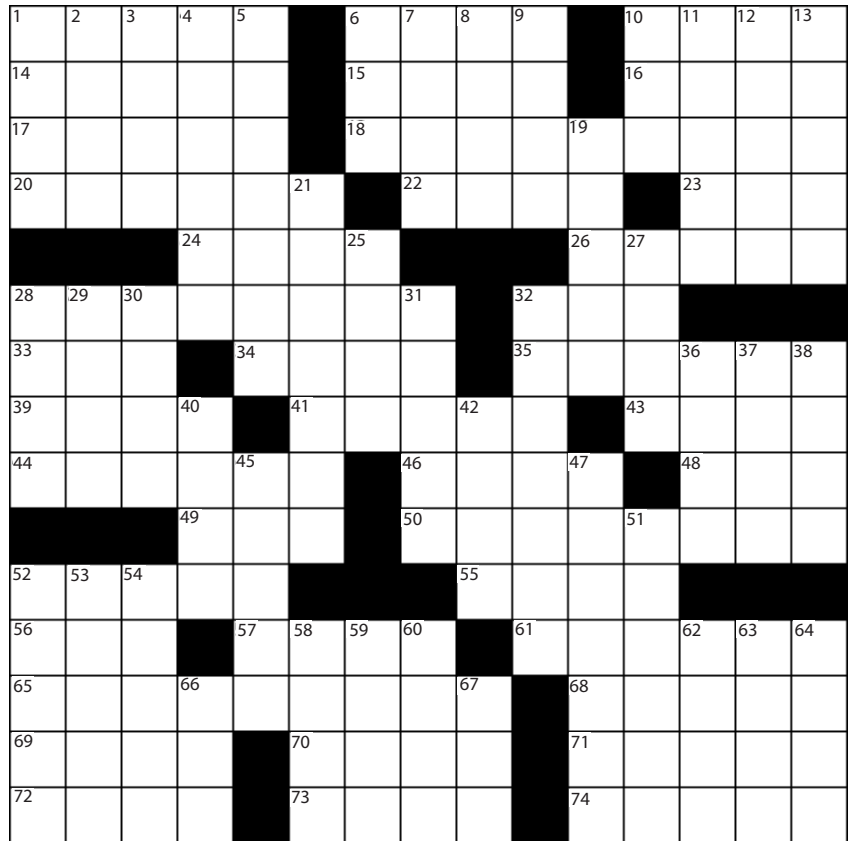
Good - 15 Words **Very Good** - 20 Words **Excellent** - 25 or more

P	N	X
G	A	I
D	E	N

Crossword

Across

- 1. Piano part
- 6. Walk through water
- 10. Primates
- 14. "Aida," for one
- 15. Corrosive substance
- 16. Highway exit
- 17. Oven gadget
- 18. Deep respect
- 20. Nova ____
- 22. Great ____
- 23. Yet, poetically
- 24. Foyer
- 26. Rented again
- 28. Pilot's expertise
- 32. Yank
- 33. Pro
- 34. Strongbox
- 35. Sweater material
- 39. On the peak
- 41. Piggins
- 43. Stocking mishap
- 44. Retitle
- 46. Highland miss
- 48. Ascot
- 49. Family mem.
- 50. New spouse's boys
- 52. Italian staple
- 55. Narrow opening
- 56. House addition
- 57. Sunday service
- 61. Trapped
- 65. Do away with
- 68. Asparagus unit
- 69. Crazy
- 70. Serving aid
- 71. Cook's oil
- 72. Goblet part
- 73. Spot
- 74. Extend a subscription



Down

- 1. Cooking vessels
- 2. Long tale
- 3. Floor model
- 4. Vocalist ____ Franklin
- 5. Lassos
- 6. Military conflict
- 7. Scored on serve
- 8. Prima donna
- 9. Adam's abode
- 10. "We ____ Family"
- 11. Discussion group
- 12. TV host
- 13. Used money
- 19. Show again
- 21. Pseudonyms
- 25. Storage area
- 27. Hen products
- 28. Distant
- 29. Ballot
- 30. Steamy appliance
- 31. Armstrong and Diamond
- 32. Cap ornaments
- 36. On top of
- 37. Precipitation
- 38. Matures
- 40. Time gone by
- 42. Breaks bread
- 45. Florida City
- 47. Certain advertiser
- 51. Paper fastener
- 52. Rinds
- 53. Distribute
- 54. Bread portion
- 58. Picnic intruders
- 59. Calcutta dress
- 60. Right away!
- 62. Harness strap
- 63. Roof edge
- 64. Depicted
- 66. Dad's mate
- 67. Sight organ

Sudoku

Fill the grid with digits so that each column, each row, and each of the nine 3x3 subgrids contain all of the digits from 1 to 9.

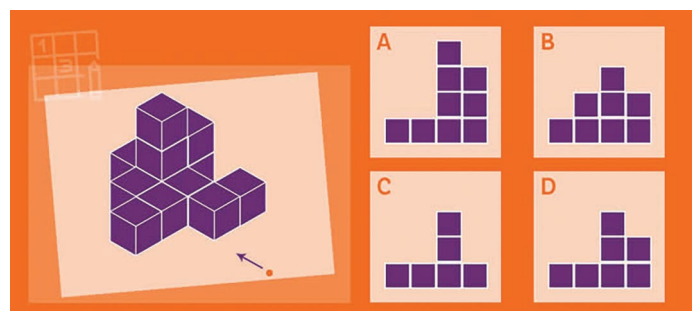
	1					2		
			8	3	1			
							5	
			1		7	9		
		5		9				8
	9							3
3	7				5			2
4		9	7	6				
					8		3	4



Brain Teasers

Seven kids are in line for a carnival ride. Third in line is Joe, and two spots ahead of him is Sally. Seventh in line is Kate, in front of Kate is Rylie, behind Joe is Chris, Elizabeth is ahead of John in line. **What is the order of the line?**

Which one is the right view for the person who stays at the orange point and looks at the figure from the pointed direction?



WINNER

Jamie Folker - Dalby Branch



Snap That Staff Photography Competition



Shane Buckleigh - Melbourne Branch



Patrick Scott - Brisbane Branch



Sheen Kovacs - Perth Branch



Evan Low - Perth Branch



David Evans - Darwin Branch

Enter the Staff Photography Competition for your chance to win a \$50 egift card.

Send your photo in high resolution to marketing@brookshire.com.au

Equipment Hire List



Front End Loaders

CATEGORY	MAKE	MODEL	ENGINE	WEIGHT
1.5m ³	Komatsu	WA150	74 kW 99 HP @ 2000 rpm	7.5 Tonne
2.5m ³	Komatsu	WA250	124 kW 166 HP @ 2000 rpm	14 Tonne
3.1m ³	Komatsu	WA320	124 kW 166 HP @ 2000 rpm	14 Tonne
3.5m ³	Komatsu	WA380	140 kW 187 HP @ 2000 rpm	16 Tonne
3.75m ³ - 4m ³	Komatsu	WA430	173 kW / 232 HP @ 2.100 rpm	18 Tonne
3.4m ³	Caterpillar	950M	187 kW 250 HP	20 Tonne
3.6m ³	Caterpillar	962M	185 kW 248 HP	20 Tonne
4m ³ - 5m ³	Komatsu	WA470	204 kW / 274 HP @ 2.000 rpm	23 Tonne
5m ³	Komatsu	WA480	223 kW / 299 HP	25 Tonne
4m ³ - 5m ³	Volvo	L150G	210 kW / 1400 rpm	25 Tonne
4.7m ³ - 6.4m ³	Komatsu	WA500	266 kW / 357 HP @ 1900 rpm	32 Tonne
5.6m ³	Caterpillar	980M	278 kW	30 Tonne
5.6m ³	Caterpillar	982M	278 kW @ 1800 rpm	35 Tonne
6.4m ³	Komatsu	WA600	395 kW / 529 HP @ 1800 rpm	55 Tonne
7m ³	Volvo	L260H	309 kW / 420 HP	34 Tonne
13m ³	Komatsu	WA900	638 kW / 856 HP	107 Tonne



Tool Carriers

CATEGORY	MAKE	MODEL	ENGINE	WEIGHT
2.2m ³ - 2.3m ³	Komatsu	WA250PT	104 kW 140 HP / 2000 rpm	10 Tonne
2.2m ³ - 2.3m ³	Komatsu	WA250PZ	103 kW 138 HP @ 2000 rpm	12 Tonne
2.5m ³ - 2.7m ³	Komatsu	WA320-8	123 kW/165 HP @ 2100 rpm	15 Tonne
2.5m ³ - 2.7m ³	Komatsu	WA320PZ-6	125 kW / 167 HP	15 Tonne
2.5m ³ - 2.7m ³	Volvo	L90F	129 kW @ 1700 rpm	16 Tonne
3m ³	Volvo	L110F	170 kW @ 1700 rpm	19 Tonne
3.5m ³	Volvo	L120F	180 kW @ 1700 rpm	20 Tonne
4.2m ³	Volvo	L150F	209 kW @ 1400 rpm	23 Tonne
4.4m ³	Volvo	L180F	234 kW @ 1400 rpm	26.6 Tonne
5.2m ³	Volvo	L220H	279 kW 379 HP @ 1400 rpm	32.8 Tonne



Excavators

CATEGORY	MAKE	MODEL	ENGINE	BUCKET CAPACITY
1.5 Tonne	Komatsu	PC14R	11,6 kW / 15,6 HP @ 2.600 rpm	0.03m ³
1.8 Tonne	Caterpillar	301.8	16.1kW / 19.2 HP @ 2,400 rpm	0.033m ³
3 Tonne	Komatsu	PC30MR	22,0 kW / 29,5 HP @ 2.400 rpm	0.09m ³
3 Tonne	Hitachi	ZX33	21.2 kW (28.4 HP)	0.09m ³
5 Tonne	Komatsu	PC55MR	29.1 kW 39 HP/2400 rpm	0.15m ³
5 Tonne	Komatsu	PC45MR	29.1 kW 39 HP/2400 rpm	0.15m ³
5 Tonne	Komatsu	PC40MR	29.4 kW 39.4 HP/2350 rpm	0.15m ³
8 Tonne	Komatsu	PC78MR	40,5 kW / 54 HP @ 1.850 rpm	0.28m ³
8.5 Tonne	Komatsu	PC88MR	50.7 kW 68 HP @ 1950 rpm	0.34m ³
9 Tonne	Caterpillar	308CR	52.4kW / 70.3 HP @ 2,200 rpm	0.23m ³
14 Tonne	Komatsu	PC138US	72.1 kW / 96.6 HP @ 2200 rpm	0.53m ³
14 Tonne	Komatsu	PC160LC	90 kW / 121 HP @ 2200 rpm	0.6m ³
14 Tonne	Hyundai	R140LC	84 kW / 113 HP @ 2,100 rpm	0.6m ³
22 Tonne Zero Swing	Komatsu	PC228US	116 kW 155 HP @ 2000 rpm	1.0m ³
22 Tonne	Caterpillar	320GC	107 kW (143 hp)	1.0m ³
22 Tonne	Caterpillar	320DL	103 kW / 140 HP @ 1800 rpm	1.3m ³
22 Tonne	Hitachi	ZX210H	122 kW (164 HP)	1.00m ³
22 Tonne	Komatsu	PC200LC	110 kW 147 HP / 2000 rpm	1.2m ³
22 Tonne	Komatsu	PC210LC	116 kW / 156 HP @ 2.000 rpm	1.68m ³
22 Tonne	Komatsu	HB215LC	110 kW / 148 HP @ 2.000 rpm	1.36m ³
23 Tonne	Komatsu	PC220LC	110 kW 147 HP / 2000 rpm	1.26m ³
23 Tonne	Hitachi	ZX225USLC	159 hp (118 kW) @ 2,000 rpm	1.09m ³
30 Tonne	Volvo	EC290CLC	153 kW (205 hp)	1.2m ³
30 Tonne	Komatsu	PC270LC	149 kW 200 HP / 2050 rpm	1.25m ³
33 Tonne	Hitachi	ZX330	247 HP (180 kW)	1.4m ³
33 Tonne	Hitachi	ZX350H	184 kW (246 HP)	2.00m ³
34 Tonne	Komatsu	PC300LC	194 kW 260 HP / 1950 rpm	1.8m ³
35 Tonne	Hitachi	ZX350LC	202 kW / 271 HP	2.1m ³
36 Tonne	Komatsu	PC350LC	194 kW / 260 HP @ 1.950 rpm	2.66m ³
37 Tonne	Caterpillar	336	232 kW	2.27m ³
45 Tonne	Komatsu	PC450LC	270 kW / 362 HP @ 1900 rpm	2.8m ³
60 Tonne	Komatsu	PC600LC	288 kW 386 HP @ 1800 rpm	3.81m ³
80 Tonne	Komatsu	PC850-8E0SE	370 kW 496 HP / 1800 rpm	4.3m ³
85 Tonne	Komatsu	PC800LC	363 kW 487 HP @ 1800 rpm	4.5m ³



Rollers & Compactors

CATEGORY	WEIGHT	MAKE	MODEL	COMPACTION WIDTH
Smooth Drum Vibrating	7 Tonne	Bomag	BW177DH	100mm
Smooth Drum Vibrating	12 Tonne	Bomag	BW211D	2130mm
Smooth Drum Vibrating	11 Tonne	Dynapac	CA252D	2130mm
Smooth Drum Vibrating	11 Tonne	Bomag	BW212D	2130mm
Smooth Drum Vibrating	12 Tonne	Hamm	3412 HT V10	2140mm
Smooth Drum Vibrating	12.5 Tonne	Caterpillar	CS56B	2134mm
Smooth Drum Vibrating	12.7 Tonne	Dynapac	CA302D	2130mm
Smooth Drum Vibrating	13.2 Tonne	Dynapac	CA362D	2130mm
Smooth Drum Vibrating	12.6 Tonne	Bomag	BW213D	2130mm
Smooth Drum Vibrating	15.7 Tonne	Hamm	3516	2140mm
Smooth Drum Vibrating	16.1 Tonne	Bomag	BW216D	2130mm
Smooth Drum Vibrating	17.89 Tonne	Hamm	3518	2390mm
Smooth Drum Vibrating	19.8 Tonne	Hamm	3520	2220mm
Padfoot Vibrating	12 Tonne	Bomag	BW211D	2130mm
Padfoot Vibrating	12.6 Tonne	Bomag	BW213D	2130mm
Padfoot Vibrating	13.2 Tonne	Dynapac	CA362D	2130mm
Padfoot Vibrating	15.7 Tonne	Hamm	3516P	2140mm
Padfoot Vibrating	16.1 Tonne	Bomag	BW216PD	2130mm
Padfoot Vibrating	17.6 Tonne	Caterpillar	CP76B	2134mm
Padfoot Vibrating	17.89 Tonne	Hamm	3518P	2390mm
Padfoot Vibrating	18.6 Tonne	Dynapac	CA602PD	2400mm
Padfoot Vibrating	19.4 Tonne	Bomag	BW219PD	2130mm
Padfoot Vibrating	19.8 Tonne	Hamm	3520P	2220mm
Multi Tyre Pneumatic	18 Tonne	Hamm	HP280	2166mm
Multi Tyre Pneumatic	18.3 Tonne	Hamm	GRW280	2084mm
Multi Tyre Pneumatic	20 Tonne	Ammann	AP240	1986mm
Multi Tyre Pneumatic	20 Tonne	Bomag	BW24RH	2042mm
Multi Tyre Pneumatic	20 Tonne	Bomag	BW25RH	2265mm
Multi Tyre Pneumatic	24 Tonne	Caterpillar	CW34LRC	2160mm
Double Drum	2.6 Tonne	Hamm	HD12VV	1200mm
Double Drum	2.8 Tonne	Bomag	BW120AD	1200mm
3 Pin Static	14 Tonne	Aveling Barford	DC014	1200mm
Plate Compactors	500kg	Bomag	BPR 70/70D	701mm
Plate Compactors	500kg	Dynapac	LG500	550mm
Plate Compactors	750kg	Bomag	BPR 100/80	650mm
Plate Compactors	750kg	Dynapac	LH700	660mm



Graders

CATEGORY	MAKE	MODEL	ENGINE	WEIGHT
12' Motor Grader	Caterpillar	120MVHP	103 kW / 138 HP @ 2000rpm	14.5 Tonne
12' Motor Grader	Komatsu	GD555	146kW 196 HP @ 2000 rpm	18 Tonne
14' Motor Grader	Caterpillar	140M	136 kW 183 HP	18.4 Tonne
14' Motor Grader	Caterpillar	140H	136 kW 183 HP	18.4 Tonne
14' Motor Grader	Caterpillar	140G	136 kW 183 HP	18.4 Tonne
14' Motor Grader	Caterpillar	150AWD	159 kW 213 HP	19.8 Tonne
14' Motor Grader	Komatsu	GD655	165kW 221 HP @ 2100 rpm	18.5 Tonne
14' Motor Grader	John Deere	770G	190 kW	19.3 Tonne
14' Motor Grader	John Deere	672G	190 kW	20 Tonne
14' Motor Grader	John Deere	772GP	205 kW	20.5 Tonne
16' Motor Grader	John Deere	872GP	224 kW	21.6 Tonne
16' Motor Grader	Caterpillar	16MQLR	217 kW 291 HP	30 Tonne
24' Motor Grader	Caterpillar	24	399-518 kW (535 - 694 HP)	73 Tonne



Dozers

CATEGORY	MAKE	MODEL	ENGINE	FRONT BLADE WIDTH
17.3 Tonne	Caterpillar	D6N	112 kW	4080mm
17.7 Tonne	Caterpillar	D6H	179 HP	4486mm
21 Tonne	Caterpillar	D6T XL	154 kW 207 HP	3693mm
21 Tonne	Caterpillar	D6T LGP	154 kW	3693mm
27 Tonne	Caterpillar	D7	179 kW 240 HP	3988mm
39.4 Tonne	Caterpillar	D8	233 kW 312 HP	5045mm
70 Tonne	Caterpillar	D10T	447/538 kW 600/722HP	7416mm



Dump Trucks

CATEGORY	PAYLOAD	MAKE	MODEL	ENGINE
Site Dumper	9 Tonne	Wacker Neuson	DV90	55.4 kW / 75.3 HP @ 2300rpm
Articulated Dump Truck	30 Tonne	Komatsu	HM300	254 kW 340 HP @ 2000 rpm
Articulated Dump Truck	37 Tonne	Hitachi	AH400D	308 kW 413 HP
Articulated Dump Truck	40 Tonne	Komatsu	HM400	254 kW 340 HP @ 2000 rpm
Articulated Dump Truck	41 Tonne	Caterpillar	745	376 kW 504 HP



Water Trucks

CATEGORY	CAPACITY	MAKE	MODEL	POWER
Rigid	14,000 L	Isuzu	FVZ 260-300	221 kW @ 2,400 rpm
Rigid	14,000 L	Hino	500	280hp/206kW
Rigid	15,000 L	Isuzu	FVZ 260-300	221 kW @ 2,400 rpm
Rigid	15,000 L	Hino	500	280hp/206kW
Rigid	15,000 L	Mercedes Benz	Axor	205 kW/279 hp at 2 300 rpm
Rigid	20,000 L	Isuzu	FYH 2000 8x4	257 kW @ 2,000 rpm
Rigid	20,000 L	Iveco	Trakker AD450 6x6	450hp/336kw @ 1900rpm
Articulated	16,000 L	JCB	Fastrac 185/65	188 hp / 142 kW / 2400rpm
Articulated	16,000 L	Chamberlain	C6100	101 hp / 75.3 kW / 2200rpm
Articulated	16,000 L	Mercedes Benz	MB Trac	125 hp / 93.2 kW / 2600rpm
Articulated	26,000 L	Komatsu	HM300	254 kW 340 HP
Articulated	35,000 L	Komatsu	HM400	254 kW 340 HP



Service Trucks, Fuel Trucks & Tipper Trucks

CATEGORY	CAPACITY	MAKE	MODEL	POWER
Service Truck	8 Compartments	Isuzu	FVZ 260 - 300	221 kW @ 2,400 rpm
Service Truck	8 Compartments	Hino	500	280hp/206kW
Fuel Trailer	1,400 L	-	-	-
Fuel Trailer	2,000 L	-	-	-
Fuel Truck	14,000 L	Hino	500	280hp/206kW
Tipper Truck	11m ³	Isuzu	FVZ 260-300	221 kW @ 2,400 rpm
Tipper Truck	11m ³	Hino	500	280hp/206kW
Tipper Truck	11m ³	Isuzu	FVZ 1400	221 kW @ 2,400 rpm
Side Tipper	21m ³	Howard Porter	-	-
Side Tipper	24m ³	Road West	-	-



Backhoes

CATEGORY	MAKE	MODEL	ENGINE	WEIGHT
4.32m Dig Depth	JCB	4CX	81 kW / 1300rpm	8.178 Tonne
4.8m Dig Depth	Komatsu	WB97R-5E0	74 kW	7.6 Tonne
4.883m Dig Depth	Caterpillar	432E	67 kW / 2200rpm	9.1 Tonne



Skid Steer Loaders

CATEGORY	MAKE	MODEL	OPERATING WEIGHT	TIPPING LOAD (35%)
Tracked	Bobcat	T140SJC	3.021 Tonne	635kg
Tracked	Caterpillar	239D	3.372 Tonne	695kg
Tracked	Caterpillar	249D	3.552 Tonne	790kg
Tracked	Caterpillar	259D	4.076 Tonne	915 kg
Wheeled	Komatsu	SK714	2.53 Tonne	650kg
Wheeled	Caterpillar	226B	2.641 Tonne	680kg
Wheeled	Caterpillar	246C	3.348 Tonne	975kg



Telehandlers

LIFTING WEIGHT	MAKE	MODEL	OPERATING WEIGHT	LIFTING HEIGHT
3 Tonne	JCB	531-70	6.9 Tonne	7000mm
3.2 Tonne	Manitou	MT732	7.5 Tonne	6900mm
3.5 Tonne	JCB	535-95	9.1 Tonne	9500mm
4 Tonne	JCB	541-70	7.8 Tonne	7000mm



Forklifts

LIFTING HEIGHT	MAKE	MODEL	OPERATING WEIGHT	LOAD CAPACITY
3000 mm	Hyster	H4.0FT	6.29 Tonne	4 Tonne
4000 mm	Hyster	H5.0FT	7.5 Tonne	5 Tonne
5336 mm	Hyster	H8.00XM	12.48 Tonne	8 Tonne
6200 mm	Hyster	H16.00XM	9.8 Tonne	16 Tonne



Light Towers

LAMP POWER	MAKE	MODEL	ILLUMINATED AREA	RUNNING TIME
1800 W	Promac	Greenlite LED	-	100 hours
4 x 320 W	Generac	V20 Hyper	4500 / 4200 m2	143 hours
4 x 350 W	Atlas Copco	H5	5,000 m2	220 hours



Machine Attachments

CATEGORY	ATTACHMENT
Excavator	GP Bucket
Excavator	Batter Bucket
Excavator	Trenching Bucket
Excavator	Skeleton Bucket
Excavator	Sieve Bucket
Excavator	Screening Bucket
Excavator	Trapezoidal Bucket
Excavator	Tilting Bucket
Excavator	Rock Breaker
Excavator	Auger
Excavator	Misu Heavy Duty Screen Attachment
Excavator	GP Grapple
Excavator	360° Grapple
Excavator	Rock Grapple
Excavator	Hydraulic Grapple
Excavator	Mechanical Grab
Excavator	Hydraulic Grab
Excavator	Sleeper Grab
Excavator	Plate Compactor
Excavator	Compaction Wheel
Excavator	Tree & Stump Mulcher
Excavator	Ripper
Excavator	GPS
Tool Handler	GP Bucket
Tool Handler	Rake Bucket
Tool Handler	Stemming Bucket
Tool Handler	Grain Bucket
Tool Handler	Forks
Tool Handler	Jib
Tool Handler	Log Forks
Tool Handler	Man Cage
Tool Handler	Tyre Grab
Tool Handler	GPS

CATEGORY	ATTACHMENT
Skid Steer	GP Bucket
Skid Steer	Rake Bucket
Skid Steer	Forks
Skid Steer	Bucket Broom
Skid Steer	Auger
Skid Steer	Trencher
Skid Steer	Levelling Attachment
Skid Steer	GPS
Telehandler	GP Bucket
Telehandler	Batter Bucket
Telehandler	Forks
Telehandler	Jib
Telehandler	GPS
Backhoe	GP Bucket
Backhoe	Trenching Bucket
Backhoe	Batter Bucket
Backhoe	Batter Bucket (Digger)
Backhoe	Auger
Backhoe	Forks
Backhoe	GPS
Grader	Roller
Grader	GPS
Tractor	Grid Roller

Brooks Hire Service is a family owned and operated business.
In late July, the Brooks family farewelled their beloved Nonno, Domenico.
Father to Roma, Father In-law to Doug, Nonno to Keith, Stuart, and Lenore, and
Biz Nonno to Maisie, Domenico, and Tilda. Dom was always there to support the family business.

Vale Nonno

02.01.1929 ~ 24.07.2020

Domenico Monaco, was born on a cold, snowy night in Cantalupo Italy on the 2nd January 1929.

Attending school only until the age of 10, he then worked on the small family property assisting with the crops, animals and daily chores. He received a very strict upbringing under the firm hand of his mother Anna.

Cantalupo was not spared by the war. When a German Division passed through the town, most of the town would go into hiding. One time Dom got too hungry and took it upon himself to walk back to the village. He grabbed some pears put them under his shirt and ran back to hiding. On his way back through the field a German attacker plane spotted him and strafed him with gunfire, Dom narrowly missed being hit. This wasn't the end of his luck as later a bomb completely destroyed the duplex unit attached to their home whilst they were eating lunch.



At the age of 21, Dom was faced with making a big life decision. He was accepted to train as a finanziere in the guarda di finanza which is an Italian law enforcement agency dealing with the economy and finance. At the same time, he received his acceptance papers to immigrate to Australia and join his father Gennaro (Jim) who had left Italy 2 years before. After careful consideration and consulting with his uncle, Dom chose to come and begin his new life here in Australia.



At the age of 22, he departed the wintery shores of Italy on board the Sabastiano Caboto and arrived in Australia 3 weeks later in the summer of 1951. He disembarked in Fremantle and his first stop was at the Beaconsfield Hotel to have a beer with his father and a few paesani.

He spent his first night in Australia with the Monaco family of Bibra Lake. Dom immediately got work in a flower garden in Spearwood, picking carnations for market. A few weeks later he and Jim moved to Kalgoorlie to cut wood for the railways. They were there for 5 months, living in a tent and enduring the harsh conditions of inland WA.

Arriving back in Fremantle, Dom found residence at the boarding house above the Capri restaurant. He worked making plaster ceilings when Medina was being built and later he commenced working in the wool industry as a wool sorter. Dom would continue to work in this field until his retirement in 1993.

He was a rather dashing young man and received several dinner invitations from Italian families wishing to marry off their daughters; however, a lovely young girl who was only 16 at the time had already caught his eye. It all happened at a wedding here in

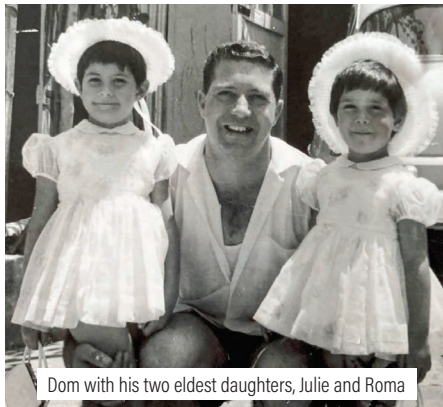


Fremantle. The minute Dom laid eyes on her, he wasted no time to ask her for a dance and it was at that point he made up his mind that she was the girl he would one day marry.

And so it was, on the 18th of October 1958 Domenico married his beautiful Rose.

They bought a half-duplex on South Street in Fremantle, next door to his parents where they raised their three beautiful daughters Julie, Roma and Anne. Dom had a great time with his family immersed in the Italian culture surrounded by chickens, ducks, pigeons and even turkeys.

Dom would take his two older daughters into Fremantle every Saturday morning for a play on the swings at the Esplanade Park. To entice his kids off the swings, he would buy them gelato from Orlando's which later became Benny's. This was Dom's time to also catch up with his friends and paesani, while Rose got some peace at home with baby Anne.



Dom with his two eldest daughters, Julie and Roma



Dom with his Mum and Dad in Spearwood

In 1968 Dom and his family joined the mass exodus of Italians moving from Fremantle to the suburbs and built their new house in Spearwood. It wasn't Dom's choice of location; however, he respected his wife's yearning to go back to the area where she grew up.

It was in Spearwood where Dom's passion for gardening was ignited. In his conversations, he exuded a love for growing plants ranging from vegetables to ornamental indoor plants and his knowledge was quite remarkable.



Dom with daughters Anne and Roma in Spearwood

His other passion was dancing. The second Dom would hear music he would be on his feet! At weddings or dances, Dom would always whisk one of the girls up, to be first on the dancefloor and he would continue to dance all night.

He enjoyed dabbling in real estate and made a few dollars buying and selling. This gave birth to his famous saying, "If you use your brains, you don't have to use your hands."



Doug, Stuart, Keith & Dom in the early 1990's

In the latter part of his life, Dom enjoyed travelling, going back to Italy for the first time in 1996. He subsequently made many trips visiting places within Australia and Europe.

As he aged his travels were limited to the Phoenix shopping centre, where he enjoyed the company of many friends. He had fun and shared many laughs among the Italian folk he met there every day.

Dom inspired everyone to not take life too seriously and encouraged his family to continually strive to improve in every aspect of life. He fostered wonderful relationships with his grandchildren and he had a tremendous love for his 7 little great grandchildren



Dom, 91 at Brooks Hire's 40th Anniversary with his granddaughters Lenore and Chloe, and daughter Julie.

Rest in Peace Dom, and as he would always say....

Soon be Christmas!



Cocky, Keith, Dom, Cassie, Roma, and Stuart with Dom's first great grandchild, Maisie at the Brooks Hire Christmas Party.



BROOKS HIRE

21300 BROOKS

WT165