

YOUR FREE COPY

THE *Eneabba*

WINTER 2024 ISSUE 17

Access Ability Made for Australia



XCMG ACCESS GEAR HITS AUSTRALIAN SHORES

HIRE | ACCESS | AIRWAYS | CRANES | EQUIPMENT SALES | FINANCE | SITE SERVICES | TRANSPORT

BROOKS

The story of Eneabba



When 23-year-old Doug Brooks recognised an opportunity to hire out equipment to the mining industry in WA in 1979, he knew it was something he had to pursue. Doug scrambled together every dollar he had, to purchase two disassembled compressors, with the remainder of the bill being settled by bankcard. He opened 'Brooks Hire Service' and ran the business from a shed in the remote WA town of Eneabba. All the while, Doug was living in a 'humpy' at the rear of the shed. There were many that warned him of the difficulty of starting a new business in a very competitive industry, but Doug was determined and it was only a matter of time before he was turning a profit on his compressors. What started as two compressors on hire, soon turned into twelve pumps on hire, but the turning point came when Doug purchased his first piece of mobile equipment: an eight tonne JEC crane. There are many great stories that came out of that shed in Eneabba. It was the foundation of Brooks Hire and the place where all of the 'hard yards' were done. Eneabba is remembered as the birth place of Brooks Hire Service.



From the MD...

Doug, Kai, Nathan, Roma, Vinny, and I, recently returned from a trip to China where we were invited to attend the 6th annual XCMG Customer Festival. We even had the pleasure of taking some customers along for the experience. On display, was the largest all terrain crane in the world, and the most complete array of production-ready plug-in electric construction machinery, compared to any other machinery manufacturer. The event confirmed to me once again that we've made the correct decision, partnering up with XCMG. This seemed to be a mutual feeling shared with XCMG towards Brooks, as out of 1200 customers and dealers worldwide, we were privileged enough to sit next to the Chairman at every meeting during the week.

We have already sold XCMG machines in new categories for us, such as rollers and graders. This provides a great opportunity for our dealership to grow exponentially. Also noteworthy, is the sale of an XCMG plug-in electric front end loader to a top tier public mining company.

Brooks has further expanded our group of companies with the recent introduction of Brooks Mining. Josh Willett has taken up the role of General Manager for Brooks Mining, with the division's focus on supplying mining machinery to our mining clients for dry hire. Previously, our Hire department's largest excavator has been 85 tonnes; Brooks Mining has the ability to supply excavators up to 700 tonnes, as well as haul trucks, 24ft moldboard graders and loaders up to 170 tonnes. The business unit will provide a more specialised service for our larger hire equipment and more tailored solutions for our customers' mine site operation needs.

New to Western Australia, Brooks has opened a city-based office in the Perth CBD. Located at Shop 1, 329/331 Murray St, the new office grants our clients and other stakeholders within the CBD, the convenience to come in for a more personal face-to-face conversation with our Business Representatives. If you're in the area, make sure you pop in for a coffee and chat.

Thank you everyone for your continued loyal support!

Stuart Brooks
Managing Director

THE Eneabba WINTER 2024

contents



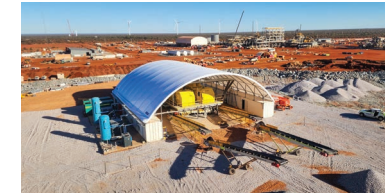
03 Access Ability
New XCMG access equipment hits Aussie shores



05 Building a Village
McNally accommodates the growing workforce



07 Renewables in Regional Aus.
TSBE push for local content in rural projects



09 Structured for Success
Elite Structures Australia build their brand



11 Cementing Darwin's Future
Work Begins on Darwin's Ship Lift Facility



13 Building Tomorrow Together
Grounded brings innovation to construction



15 Celebration of Success
XCMG holds 6th Annual Customer Festival



17 Perth's Concrete Jungle
Liam Dee transforms Perth's laneways



18 The Tech Report
Hire guide to dozer blades



19 New Equipment
Take a look at what's been rolling in



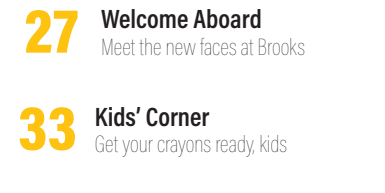
21 Swapping Suits for Boots
Lenore Brooks' trek for mental health



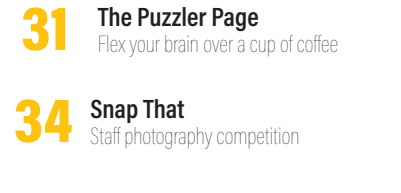
23 Events and Exhibitions
Out and about with Brooks



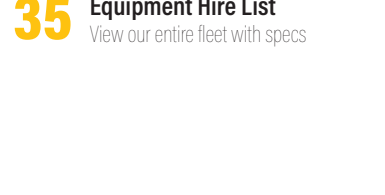
25 Brooks Around the Nation
Branch news from around the country



27 Welcome Aboard
Meet the new faces at Brooks



31 The Puzzler Page
Flex your brain over a cup of coffee



33 Kids' Corner
Get your crayons ready, kids



34 Snap That
Staff photography competition

Your first choice for Mining Industry Flights

- Corporate Charter Flights
- FIFO Flights
- Urgent Air Freight
- 7x King Air Aircraft - up to 9 passengers
- 6x Learjet Jets - up to 7 passengers



1800 AIRWAY (247 929)
ops@brooksa Airways.com
brooksa Airways.com

BROOKS
AIRWAYS

BROOKS

CONTACT DETAILS
Brooks Hire Service Head Office

30 Coulson Way
Canning Vale WA 6155

Phone: 1300 276 657

Email: sales@brookshire.com.au

www.brookshire.com.au

The Eneabba is a Brooks Hire Service Pty Ltd publication. All photographs and written articles remain the property of Brooks Hire Service Pty Ltd. No reproduction in whole or in part of this publication is allowed without the permission of the Managing Director.

If you would like to make a submission, please email marketing@brookshire.com.au

Digital Distribution 12,884
Printed Copies 5,000



Access Ability

XCMG access equipment hits Australian shores

Following Brooks Equipment Sales' and XCMG's major industry move in signing a dealership agreement in March, Brooks customers are now reaping the rewards.

Where Brooks Equipment Sales (BES) were previously only able to offer their clients excavators up to 80t, and front-end loaders with a 3m³ bucket capacity, XCMG's extensive equipment range has opened the door to an incredibly diverse range of equipment for sale.

In addition to excavators and loaders, BES can now supply customers with all lines of earthmoving and access equipment in Western Australia, South Australia, Northern Territory, and the majority of Queensland.

Since the agreement was signed in early 2024, Brooks Equipment Sales have taken delivery of over 250 XCMG machines, with new machines arriving weekly. Of this figure, are a number of EWPs, new to the Australian market.

Tried & Tested

Prior to stocking XCMG models in the sales fleet, the Brooks team put them to work, undergoing rigorous testing in the Brooks Hire

fleet. Operating out of the Pilbara in WA, these machines performed brilliantly in the Australian conditions and proved to be extremely reliable.

Brooks Access Service Manager, Luke Johnston, has watched the implementation of these machines in the Brooks Access hire fleet, and operated them firsthand.

"The brand is a giant in the global market for a reason," Luke shared. "With hundreds of machine models, this positioning is strongly based on manufacturing a reliable product with a good support network at an affordable price."

Designed and manufactured to meet Australia's strict requirements, these machines operate with stability and reliability as a paramount, and safety as a non-negotiable.

New from the port and now available for sale from BES, are a number of 19ft XG0807ACW and 26ft XG1012AC electric scissor lifts.

The XG0807ACW electric scissor lift features a zero inner turning radius, allowing access in narrow spaces, with a platform capacity of 230kg and 25% gradeability. Its platform dimensions are 1.67m x 0.74m.

The XG1012AC electric scissor lift adopts an energy-efficient electric drive system with zero emissions and low noise. It has a platform capacity of 450kg and gradeability of 25%. Its platform dimensions are 2.27m x 1.12m.

Still to join the fleet and on the way, are the following models:

Model	Specification	Type
XG1008AC	26'	Scissor Lift
XG1218RT	32' RT	Scissor Lift
XG1523RT	40' RT	Scissor Lift
XG1823RT	50' RT	Scissor Lift
XGA16K	45'	Artic. Boom Lift
XGA20K	60'	Artic. Boom Lift
XGA26K	80'	Artic. Boom Lift
XGS22K	65'	Telescopic Boom Lift
FD25T	2.5t	Forklift
FD35T	3.5t	Forklift
FD50T	5t	Forklift
FGL25T	2.5t	Dual Fuel Forklift
FGL50T	5t	Dual Fuel Forklift

With these XCMG machines adapted to suit Aussie conditions, Johnston also highlights the equipment's adaptability to individual customers' requirements. "Machines are customisable to your local requirements and the XCMG research and development team follow up on the products to ensure they not only meet but exceed your expectations."



Brooks Equipment customers further benefit from an XCMG Technical Centre and Service Centre, newly situated next door to the BES Welshpool branch in Perth, where customers can go direct for support and OEM parts.

Worldwide Success

In the recent "AccessM20 List" released by Access International, XCMG has maintained its strong positioning within the global top 3 for the world's largest access equipment manufacturers by revenue for the year 2023.



"Leveraging years of technological achievements, XCMG is leading the industry's development with major breakthroughs in product safety, sustainability, and maneuverability, which are achieved through intelligent equipment, automated manufacturing, modularised core components, and digitalised management, creating greater value for our customers and partners," said Li Qianjin, Assistant President of XCMG Machinery.

Being exported to more than 60 countries, the whole of XCMG's aerial work platform fleet is designed to pass the strictest of certification requirements, with all Australian EWP products being AS/NZS1418 certified.

XCMG's export volume continues to grow rapidly, as demand continues to soar globally. As new models are introduced to the range, specifically suited to Australian conditions, Brooks Equipment will in turn, continue to expand their fleet for sale.

Available in WA, NT, SA, and the majority of QLD, to view the entire range of XCMG access equipment for sale, visit or contact the Sales team directly. For Sales West, contact 08 6350 0471, and for Sales East, contact 08 6350 0470.



From left to right, McNally Directors, Rhys McNally, Mark McNally, Glenn McNally, and Nick Vogel

Building a Village

McNally accommodates the growing workforce

McNally Group started with humble beginnings in 2009 and have grown into a major player in the mining and resources sector, designing and constructing remote accommodation villages of all sizes and specifications.

Brothers Mark, Glen, and Rhys McNally, began the business with a focus on fabricating and delivering quality modular buildings, having all been involved in modular construction for many years previously. Nick Vogel joined the business in 2012, bringing with him a wealth of in-situ site construction experience: McNally Group then started to take on more site-based disciplines. Mark, Glenn, Rhys, and Nick are the owners and Directors of the McNally business and are hands on involved in the day-to-day operations and business strategy.

McNally Group's head office and manufacturing yards are located in Henderson, Western Australia. McNally's clients enjoy the way they operate. This is achieved by delivering on the promise that they make to each one of their clients, which is, "We do what we say we are going to do, first time, on time, all the time."

As simple as it seems, this promise has helped McNally develop a reputation within the industry that has seen them grow into the company that it is today.

Another key element to their success is the partnership approach they take with their clients that have similar core values. This enables McNally Group to align and work together in a collaborative manner to pursue and attain common project goals. Managing Director, Mark McNally says, "We pride ourselves on honesty and transparency which enables us to foster a strong, positive relationship which lasts well beyond the job at hand". This proven approach is why they win work and continue to win repeat business.

Over the past 5 years McNally has constructed multiple villages across WA, but three in particular feature state of the art 'combined' mess facilities – using a mix of modular and traditional site-built construction methods to deliver kitchen-dining-tavern facilities that are the envy of the industry.

McNally has seen the Mining and Resources sector change dramatically since opening its doors; maybe more so in the past five years with new industry standards being sought by clients in relation to room size, and amenity and higher quality facilities and services being offered with the villages. McNally brings all this latest cutting-edge information to the table for its clients with a focus on safety in design and end user comfort and experience.



Japal Village kitchen

McNally has been able to promote itself as a true turnkey option for small and large scale villages due to its continued commitment to invest in people, training, plant and equipment. McNally now directly employs almost 100 people, with an in house architectural and structural design team, well-resourced project management teams, HSEQ Manager, site supervisors, trade assistants and operators. Investments in good quality capital equipment has enabled McNally to self-perform site works where previously, it has relied on third party involvement.



Mardie Salt Village, North West WA

McNally continues to break new ground and expand its capabilities. The last couple of years has seen them take on a number Non-Process Infrastructure (NPI) packages. While not trying to compete in the large scale NPI works, McNally sees a lot of upsides in gaining experience and organically building capabilities at the ground level to ensure the delivery of high quality infrastructure projects are done so safely and on time.

What does the future look like for this WA success story? Sales Manager, Bede Hegarty says, "It's exciting to reflect on the journey from where McNally started to where it is today. It's a testament to the dedication of Mark, Nick, Rhys, and Glenn. We will continue to keep a laser focus on our core business which got us here, with delivering exceptional quality mining and resource projects, our top priority. While we remain committed to our foundational strengths, we are also exploring new opportunities to better serve our customers and adapt to the evolving market and in doing so, making McNally an even more robust business. Our future is bright, and we look forward to sharing this journey with you."

For more information go to mcnallygroup.com.au.



McNally Head Office, Henderson WA



Renewables In Regional Australia

TSBE push for local content in projects in rural and regional communities

As the renewable energy industry continues to expand in Australia, the scale of infrastructure development in rural and regional communities, naturally follows. While these projects are necessary to achieve decarbonisation, the immediate and long-term impacts on the communities that they are built upon, need further consideration.

In Queensland alone, there is currently \$60 billion being spent or earmarked to be spent on renewable energy investment projects. The Queensland Government's Energy and Jobs Plan has set ambitious targets of reaching more than 80 per cent of the state's energy production being derived from renewable sources by 2035.

Economic development organisation, Toowoomba and Surat Basin Enterprise (TSBE) are working to ensure the residents of these regions receive improved local outcomes and benefits from external investment for these communities.

Being Great Neighbours

For over a decade, TSBE have sought to support their regions of operation, covering Toowoomba, Western Downs, Maranoa, and Southern Downs areas of the Darling Downs.

Home to the Western Downs Green Power Hub, which is capable of producing over 1,080 GWh per year, the Western Downs is already referred to as the energy capital of Queensland and sits in one of the states 12 Renewable Energy Zones (REZ).

Western Downs Regional Council Mayor Andrew Smith says communities in the region are owed the opportunity to contribute and benefit from the significant investment in energy projects.

"Through our new Communities Partnering Framework, Council has taken a firm stance that developers in our region align with our focus on growing our regional communities and economy," Cr Smith said.

Developed by the Western Downs Regional Council, the Communities Partnering Framework is tailored to large businesses who either employ over 200 employees and/or have an annual turnover of more than \$250 million. The vision of the Framework is to empower communities to partner with the private sector, and Council, to deliver sustainable economic and social outcomes. As Cr Smith puts it, "it's about being great neighbours."



Forging A Future

While local governments like the Western Downs have taken the opportunity to establish a framework of expectation that includes local content, there is currently no obligation, or conditions imposed by government for projects to commit to local spend.

During the construction of the Toowoomba Second Range Crossing, traversing the Great Dividing Range and representing the largest Australian Government funding commitment to a single road project in Queensland's history, the commitment was made early by the project and supported by government, to make sure locals were able to secure opportunities from the \$1.6 billion project.

According to the Queensland Government, more than 80 per cent of the contracts awarded for the project went to local businesses; however, this was very much championed at a local level and demonstrates the importance of driving local content and ensuring that regional communities benefit from major infrastructure projects through reporting of the spend.

The quick boost to regional communities is in the construction phase and this is where Queensland's small to medium business excel. Excavation, drainage works, civil, engineering, and supply of goods and services to a construction site, will greatly support regional communities.

It also builds experience to work on large scale projects, and with the pipeline of projects to come, building capability means building ongoing legacy for business and local economies.

"Our experience over the last decade tells us that this won't happen automatically if we just rely on contractors who try to do the right thing - we need a more rigid system," says TSBE CEO April Cavanagh.

Currently there is not a clear reportable framework, which leads to missed opportunities. TSBE call on the Queensland State Government to consider establishing a framework to hold energy investors and developers accountable to ensuring local content is delivered and measured, to make sure our regional communities are deriving true benefit from our states transition to renewable energy.

Ensuring local content in rural and regional communities means long term sustained economic benefits, community support, sustainable development, capacity building and regional diversification.



"Industry needs to set targets, measures, and reporting obligations for Tier One contractors to engage local businesses within the region wherever possible; to simply go Queensland-wide or Australia-wide is not good enough.

"Every purchase made locally, every dollar reinvested back into our towns and business, ripples through our community, sparking a chain reaction of benefits," says Cr Smith.

On the dawn of this state's energy transition, TSBE are calling for it to be a chance to embrace the challenge; to create new jobs, opportunities and make regional communities stronger.

To find out more, visit www.tsbe.com.au



Elite Structures Australia build their brand

What services do Elite Structures Australia (ESA) provide, and what industries do you work with?

Established in 2022, Elite Structures Australia is your trusted partner in the realms of mining, construction, and industrial sectors.

ESA began with a sole focus on the installation of cutting-edge dome structures, but has evolved to become a comprehensive solution provider, offering a myriad of services tailored to meet the diverse needs of our clients.

We offer a complete start-to-finish solution, managing every stage of your project. From the supply and installation of dome structures, hold down/anchoring solutions, and pod roofs, to a wide array of civil services including slabs, pads, precast blocks, and traditional footing and concrete-free solutions, we've got you covered at every step of your project.

Previously Stanley Rigging and Construction, can you tell us when ESA was established, and what were the main reasons for the rebrand?

Our rebranding marks a significant milestone in our journey, reflecting our commitment to providing a broader range of services and a more comprehensive approach to construction.

It symbolises our dedication to excellence in all that we do. Whether it's complex rigging, innovative structural solutions, or comprehensive project management, we bring unparalleled expertise and a passion for perfection to every project.

Expect to experience more of the same trusted quality and reliability you've come to expect from Stanley Rigging and Construction, now with an expanded vision and enhanced capabilities.

Providing custom-designed dome and container structures, what are some of the challenges you face?

We understand that every job comes with its own set of challenges. From unpredictable weather conditions to high winds, the obstacles we face can be demanding. However, we view these challenges as opportunities for growth and improvement.



Adverse weather and difficult conditions push us to refine our techniques and develop innovative solutions. By always working on better ways to tackle the toughest situations, we ensure that we remain at the forefront of the industry, providing unparalleled service and quality to our clients.



ESA offer engineered and certified cyclone blocks and tie down kits on sea containers. Can you tell us about the process of securing these assets during extreme weather conditions?

Engineered cyclone blocks are critical in ensuring the safety and stability of structures in extreme weather conditions. Proper positioning and securing of these blocks using adequately rated components is essential: A structure is only as strong as its weakest link.

We've heard alarming stories of cyclone blocks being secured with inadequate materials like nylon rope. Such practices jeopardise the integrity of the entire structure. They must be anchored securely to prevent sliding as it can compromise the stability and safety of the structure.

Using the reactions and engineering data provided by structure manufacturers, we tailor solutions that fit precisely, whether above or below ground level. This ensures that each cyclone block performs optimally, delivering the protection and stability needed in extreme conditions.



ESA has worked with Brooks Access for some time now, and currently has a JLG 600AJ HC3 articulated boom lift on hire. Can you tell us about the utilisation of these machines in your projects?

ESA recognise the invaluable partnership we have with Brooks Hire. Their commitment to providing the right equipment for our projects, often on very short notice, is a cornerstone of our success.

A recent project highlighted this exceptional service. Tasked with relocating a dome in Mindarie, we encountered a tough access track that could have posed significant logistical challenges. Thanks to the Brooks Hire team's expertise and efficiency, what could have been a complicated situation, was stress-free and seamless.

Here's to many more successful projects together!



What can we expect to see from ESA in the forthcoming years?

As we continue to grow, our services are expanding to broader markets, allowing us to bring our expertise to a wider audience. We are continuously innovating our existing solutions, ensuring that we stay at the forefront of the industry.

Looking ahead, we are focused on leveraging our growth to explore new opportunities and build stronger relationships within the industry. Our goal is to remain a trusted partner in delivering high-quality, reliable solutions for our clients, no matter the complexity of the project.

Keep an eye out for Elite Structures Australia. We invite you to come say g'day and learn more about how we can support your construction needs.

We're thrilled about what's coming next. Stay tuned for an exciting announcement that will take our services to new heights!

For more information, visit www.elitestructures.com.au



Artist Impression: Clough Group

Cementing Darwin's Future

Work begins on Darwin's Ship Lift Facility

What will be the largest ship lift in northern Australia, Darwin's Ship Lift project is further establishing the state as a thriving maritime services industry hub, for years to come.

Developing new infrastructure to lift ships from the water for maintenance, the \$400 million project will enable Darwin port to service offshore petroleum, fishing, pearling, defence and border force vessels.

A Port of Call

Throughout Australia's history, Darwin has been a prominent port for international trade. Situated at the base of Asia, it's the natural gateway for Australasian trade, and plays a significant role as the support hub for growing offshore oil and gas fields in the surrounding Arafura Sea, Timor Sea and waters off the coast of Western Australia.¹

Situated next to the Darwin Port, the Ship Lift facility will service the needs of the general maritime sector within the Asia Pacific region and long-term needs of the defence sector.

Where it currently costs the Defence Department \$500,000 every time it sends a naval vessel to the ship lift in Fremantle, WA for servicing, the new lift will drastically reduce these costs and timeframe.

Minister for Northern Australia, Matt Canavan, shared that "by building this ship lift here, it will mean the offshore patrol vessels, the Arafura class vessels, won't have to travel 10 days all the way to Fremantle and back, just to get maintenance done."²

Features

A ship lift 26 metres wide, 103 metres long and, with a vessel lifting capability of 5,500 tonnes

Wet berths to allow vessels to undertake in-water maintenance

Hard stand areas for ship repair and maintenance works

Self-propelled modular transporter (SPMT) units that transport the ships around the facility once they are out of the water

An administration building, SPMT shed and Blast and Paint Facility

East Arm utilities upgrades to support the ship lift and broader marine industry park development.

The design of the Lift will give vessel owners the ability to choose and manage their own service and maintenance providers, with one portion of the ship lift designated to privately operated providers and the other, a Common User Facility. This enables multiple providers to operate concurrently at the facility, with a legislated open access regime ensuring fair and equal use for all customers.³

Collaboration for Success

In September of 2023, the Northern Territory Government awarded the contract for the development of the Darwin Ship Lift Facility to Clough and BMD Constructions in a Joint Venture (JV).

In looking for subcontractors for the project, BMD Group Chief Executive Officer, Scott Power, highlighted the JV's selection process and their priority of keeping procurement and employment local.

"We're delivering the project under a local first approach and we're committed to making a positive impact in the Territory through education, jobs, business opportunities and community initiatives."⁴

SCOTT POWER - CONTRACT SIGNING, SEPTEMBER 2023.



© Walter_D/Adobe Stock

Approximately \$17.8 million in contracts have been let to local Territory businesses, including the first major subcontract package being awarded to the Wilga Indigenous Corporation in April of this year.

The Darwin-based entity is set to play a pivotal role in the project, with the \$16.9 million contract involving the supply and delivery of approximately 430,000 tonnes of rock; essential for laying the groundwork ahead of construction.

In the time since, the JV have awarded additional works packages, including a major contract to Pearlson Shiplift Corporation. Pearlson have been awarded with a \$48 million contract to supply the ship lift operating system, steel trestles and design and supply an integrated self-propelled modular transporter system.⁵



Artist Impression: Northern Territory Government

While Pearlson is an American business, they are one of only three companies worldwide with the unique capabilities and operating system to undertake this significant piece of work and have delivered numerous ship lifts worldwide.

Continued Development

Site works commenced in April, to establish the site ahead of dredging and construction activities. Several Brooks loaders and a water cart have been utilised in this process, carting dirt and rock from the quarry, with more Brooks machines on the way.

The project is estimated to employ 250 workers at the peak of construction and will generate and maintain hundreds of local jobs in the maritime support sector when completed.



Artist Impression: Northern Australia Infrastructure Facility

Funding for the project is supported by \$215 million from the Northern Territory Government and a concessional loan from the Northern Australia Infrastructure Facility of up to \$300 million.

It is anticipated that several components of the ship lift facility will be completed in early 2025 and the balance of work completed in 2025-26.

For the latest project updates, visit www.invest.nt.gov.au/why-the-territory/infrastructure-and-strategic-land/ship-lift

References

- ¹ www.portsaustralia.com.au/members/darwin-port
- ² www.abc.net.au/news/2019-12-10/northern-territory-government-naif-grant-ship-lift/11784690
- ³ www.invest.nt.gov.au/_data/assets/pdf_file/0011/1341893/dredge-dredge-spoil-placement-management-plan-darwin-ship-lift.pdf
- ⁴ www.bmd.com.au/bmd-constructions-awarded-the-darwin-ship-lift-facility-contract/
- ⁵ www.industry.nt.gov.au/publications/business/publications/business-bulletins/april-to-june-2024/business-bulletin-9-may-2024



Building Tomorrow Together

Grounded brings innovation to Aussie construction

Grounded Construction Group was established in 2013 when Founder and Managing Director, Paul Natoli, recognised an opportunity for remote construction within the ever-growing mining and resources sector in Western Australia.

With a builder's ticket behind him, Paul set out to build a team of skilled personnel and tradesmen who have been instrumental in establishing Grounded as a leader in the remote construction and civil projects industries.

Grounded specialises in the construction of permanent and temporary modular buildings, mining camps, non-process infrastructure, operational facilities and long-term housing for remote and civil projects Australia-wide.

Grounded places significant emphasis on developing modern, all-encompassing facilities that foster wellbeing and comfort.

This is especially important for projects located in remote areas, as physical separation from home can lead to feelings of isolation amongst employees.

Projects

Grounded's current projects include:

- Paris Grove Village Project, Albemarle
- Rocklea Palms Village Project, Rio Tinto
- Jerriwah Village Project, Rio Tinto
- Coral Bay Accommodation, Ningaloo
- Hope Downs 4, Rio Tinto

The team attribute their opportunities to work with renowned industry leaders, including Rio Tinto, Fortescue Metals Group and Albemarle, to their dedication of revolutionising the remote construction industry through the implementation of sustainable, innovative practices.

Currently, Grounded are completing works on Albemarle's Paris Grove Precinct in Australind. The project involves the construction of workforce villas and residential houses that will form part of an accommodation site spanning an impressive 16 hectares in size.

Grounded engaged mining interior design firm, Project Blue, to design the interior spaces, which will include several features that the Mental Health Commission cited as being crucial to wellbeing.

The precinct will provide state-of-the-art facilities aimed at promoting wellness and mental health on site, including a large kitchen, dining hall, gym, wellness centre, recreation centre, sports courts and a lap pool.

"We designed this village in a way that redefines what people believe is the standard for mining accommodation," says Managing Director, Paul Natoli.

Paul largely credits Grounded's enduring relationships with industry giants to a company-wide commitment to closely collaborate with clients and maintain open lines of communication. Their management team has developed end-to-end project management solutions that ensure comprehension of project goals and restraints, and seamless progression from a project's inception to its completion.

Indigenous Engagement & Sustainable Operations

Grounded's Indigenous Engagement Strategy (IES) is aimed at facilitating engagement between Grounded staff and First Nations people and communities.

"We recognise the importance of acknowledging the First Nations people's continuing relationship with our country and their unique perspectives in the regions in which we operate," shares Paul.

The IES was developed to establish and maintain an open and meaningful dialogue with First Nations people, ensuring that the cultural heritage, traditional rights and customs and of a site are respected. Additionally, the IES provides training and employment opportunities to Indigenous Australians.

In addition to the IES, Grounded has developed comprehensive infrastructure guidelines aimed at reducing the impact on the environment and communities in which it operates. These guidelines help to regulate and maximise the use of natural resources, reduce waste and prevent pollution in line with all relevant environmental legislation, regulations, and standards.

WA Mining Club Young Professionals

Grounded is a founding sponsor of the WA Mining Club Young Professionals, an organisation aimed at supporting and nurturing the development of young professionals within the mining industry in WA. The group provides networking opportunities, professional development events, mentorship programs and industry insights to help young professionals build their careers. Through its sponsorship, Grounded provides young people with opportunities to witness mining construction in action onsite and connects them with experienced industry leaders and professionals.

To find out more, visit groundedgroup.com.au



"Grounded proudly offers turnkey services that cover all aspects of project management and development."



grounded.
building tomorrow, together

Celebration of Success



XCMG holds 6th Annual Customer Festival

Over 1200 construction equipment dealers, buyers, and contractors from all over the world gathered in Xuzhou, China for the 6th Annual XCMG Customer Festival, being held alongside overseas venues in Germany, Turkey, Japan, and more. The event was held on 22nd May 2024, and a team of ten Brooks Equipment staff and customers flew to China to attend.

The festival opened with a traditional drum and dance demonstration. Performed in front of an impressive display of Chinese lantern decorated cranes, with drones buzzing overhead, it was hard not to be impressed by the theatrics of the occasion.

Marking an important milestone for XCMG, the event highlighted their latest achievements in intelligent manufacturing. A comprehensive display of over 100 pieces of equipment was on display. Chairman, Yang Dongshen emphasised the company's commitment to leading engineering technology through equipment innovation.

"XCMG will continue to embrace our mission vision of 'Empower Solid Future' by vigorously promoting the application of artificial intelligence technology," said Yang Dongshen.

The focus of this year's festival was the demonstration of integrated construction solutions across diversified scenarios such as earthmoving and road construction. One notable example was the feature of their new generation D360 bulldozer and D200H high-drive dozers performing side by side with the GR1905T traders for foundation work.



Yogesh Prajapati from NRW

With a big drive towards cleaner energy, XCMG also introduced nearly thirty new energy products across ten categories including road machinery, earthmoving equipment, cranes, material handling equipment, and aerial work platforms. Fuel savings of up to 40% have been achieved on some hybrid models that easily switch between pure electric, range extension, and plug-in modes.

On the horizon for Australia, we were granted a sneak peak at the XES35, a next-generation super 35m³ electric shovel excavator developed for open pit mining operations. The super heavy weight machine weighs in at nearly 1,100 tons with a height of 18.5 meters, which is the equivalent of a six-story building.



Stuart Brooks inside an 1100 tonne Electric Shovel Excavator

Whilst at the event, Brooks Managing Director, Stuart Brooks, was invited to speak live on CGTN television station. When asked about XCMG, Stuart responded, "Trading with China makes so much sense. Geographically, they are directly north of us, so for us in Perth, they're even in the same time zone. Plus, the 'made in China' brand, if you like, is actually a badge of quality these days."



Attendees were invited to witness intelligent production lines first-hand, surveying the processes involved in smart manufacturing that is revolutionising production efficiency.

Attending on behalf of the Brooks Equipment Sales team, was Doug and Roma Brooks, Stuart Brooks, Nathan Fenemer, Vinny Yap, and Kai Li. As special guests, Brooks Equipment also hosted Brad Gordon, and Chris Overton from Big Yellow Mining, and Jules Pemberton, and Yogesh Prajapati from NRW.

Brad Gordon and Chris Overton from Big Yellow Mining



When asked his opinion of the XCMG Customer Festival, Brad Gordon was quick to affirm that his expectations had been exceeded. As the Chief Executive Officer of Big Yellow Mining, Mr Gordon was interested in XCMG's placement in the market compared with Caterpillar and Komatsu.

"XCMG are further advanced than I had appreciated," said Mr Gordon. "In some respects, they are in front of other suppliers."

Mr Gordon was significantly impressed with the range on offer, particularly in the larger excavator and truck space categories. Witnessing the production line firsthand, Mr Gordon commented on how immaculate the factories were kept, and the advancement of automation, manufacturing a 40 tonne excavator from one production line every 20 minutes.

Mr Gordon stated, "I am confident that XCMG will make inroads into the WA mining industry. It's early days, but they definitely seem more customer focused. It won't be long before Big Yellow Mining will be engaging XCMG's prime mining equipment."

Whilst in China, the Brooks Equipment team also travelled to Qingdao, to visit the headquarters of tyre manufacturer, Techking. Established in 2007, Techking has been working with global mining and construction companies in more than 100 countries to manufacture industry standard tyres for all types of mining equipment. Techking currently supply tyres for mining giants, BHP, Rio Tinto, Liebherr, and XCMG. Brooks is collaborating with Techking to bring a ready supply of heavy equipment tyres to the Australian market. Watch this space.



Liam Dee transforms Perth laneways

Over a couple of weeks in June, artist Liam Dee has transformed Perth's Wolf Lane into a spectacle of colour and life. Amidst the concrete and brick of offices and bars, creatures to the likes of geckos, ducks and pigeons now roam the walls with surrealist inflection.

Exploring the relationships between nature and the man made, Liam's art creates a mix of realism with a blend of psychedelic form, texture and colour to create a sense of organic life constructed from the inorganic.



A multidisciplinary artist based in Perth, Liam has created public artworks for local government and private clients throughout WA. His painting, sculpture, 3D printing, and digital design have been showcased in numerous gallery exhibitions, including the Stala Contemporary's 'Summer Salon' earlier this year.

Utilising one of Brooks Access' Snorkel A38E booms, hired directly from our Perth branch, along with a whole lot of acrylic paint, Liam's Wolf Lane mural creates a mix of realism with a blend of psychedelic form, adding hypnotic elements to natural shapes.

Passionate about using public art as a platform to voice the local community, Liam's work creates a lively atmosphere in the spaces we live. For more information, visit www.liamdeeart.com



Hire Guide

Selecting a dozer blade

Your bulldozer blade is the key component in the heavy lifting and moving of your material, so knowing which blade is best suited to your task will save you time and consequently, money.

Blade attachments are multifunctioning, however, depending on project specifications, it's important to select the right one, to optimise efficiencies and reduce wear to your equipment.



BLADE	SPECIFICATIONS	BEST USES
S BLADE 	<p>Typically, the smallest of the bulldozer blade range, the Straight Blade - "S Blade" - is as it sounds; straight edged. The blade attaches at its back-bottom corners and can be set at either a tilt, or flush against the base of the earth.</p> <p>Due to its shape, this blade is best used when penetrating hard, compact, and sharp surfaces. The lack of "wings" make it a poorer option when dealing with loose materials that can spill out from the blade's sides.</p>	<ul style="list-style-type: none"> ■ Ditching ■ Stripping ■ Back-filling ■ Grading ■ Shaping
U BLADE 	<p>The Universal "U" Blade, has a curved, bucket-like shape, with wings on each side. This blade attaches to the dozer, by its bottom-back corners.</p> <p>Due to its shape, large size, and side wings, the U Blade is regularly used to transport medium-loose materials across a distance.</p>	<ul style="list-style-type: none"> ■ Ditching ■ Loose-load handling ■ Crowning
SEMI-U BLADE 	<p>Attaching to the dozer at the lower-back of the blade, the semi-U Blade has a straight blade on the base and curved wings on its edges. The additional curvature allows for the blade to collect and carry more material than the S Blade, and provide more penetrable force than that of the U Blade.</p> <p>Because of this, it is best used when moving soft to medium materials across long distances. To protect it from wear, it is recommended that this blade is not used directly on hard terrain, without breaking it down first with a ripper.</p>	<ul style="list-style-type: none"> ■ Ditching ■ Stripping ■ Levelling ■ Crowning
ANGLE BLADE 	<p>The Angle Blade attaches at the centre of the blade, allowing it to be angled at roughly 20°-30° left or right. As it doesn't have wings at the its edges, material can spill out from the sides if loaded too heavily.</p> <p>The angling ability and lack of wings, makes it ideal for shifting material to the side, rather than simply pushing it forward. Due to its ability to move up and down, as well as angling left and right, along the tracks, it can be referred to as a '4-way' blade. It is best used when shifting soft to medium, loose material.</p>	<ul style="list-style-type: none"> ■ Ditching ■ Stripping ■ Side-casting ■ Levelling

Brand specific variation in blade height and width is common, which can impact the height your dozer can reach, how much material it can carry, the distance it can travel with the material and how much control over the load your operator will have.

Before selecting your blade, refer to your jobsite, the type of material, and volume of material you're working with. For further information or to hire a dozer, contact the Brooks Hire team on **1300 276 657** or via email at sales@brookshire.com.au

New Equipment

THE BROOKS FLEET OF ASSETS

Our expansive fleet of reliable and strong- performing equipment is always growing. Supplying late model, low hour machines, here are the latest additions in our yards across the country!

BROOKS HIRE

A wide range of new attachments and heavy metal joined the fleet, including these models.



Isuzu Service Truck



Caterpillar 962M Loader



XCMG XE155U CR Excavator



Excavator and Loader Buckets



Italdem Rock Breakers

BROOKS SITE SERVICES

Keeping up with demand, our Site Services team have taken stock of a range of compressors, generators, pumps, and accessories. In addition to site-ready equipment, are new custom built models, specific to clients' requirements.



Atlas Copco CPS5.0-7 Compressor



30KVA Genmac Generator



Liquimech Standpipes

BROOKS ACCESS

It was another busy quarter for the Brooks Access team, as Head Operations opened in Canning Vale, WA. New scissor lifts, telehandlers, forklifts, and cranes have joined the fleet for both hire and sale.



Franna AT22 Crane



Genie GS-1932 XH Scissor Lifts



Liftsmart LS-RT50 RT Forklift

New XCMG equipment continues to arrive at our branches across the country. Adapted to suit Australian working conditions, these machines are ready to work. Here are just a few of the models that have landed so far.

BROOKS EQUIPMENT



XCMG XDA45 Artic. Dump Truck



XCMG XG1012AC Scissor Lifts



Husqvarna LH 700 Plate Compactor



XCMG 2.95t - 3.68t Skid Steers



Husqvarna LP 950S Artic. Trench Compactor



XCMG GR2405T Pro Grader



XCMG XCF1612K Forklift



XCMG 2.7t - 26.3t Rollers



XCMG XD120S Roller



XCMG XG0807ACW Scissor Lifts



XCMG XC938 Loader



XCMG XE500LC Excavator



Swapping Suits For Boots

Cape2Cape CEO Challenge

In May of this year, our Chief Business Officer, Lenore Brooks, took part in the Cape2Cape CEO Challenge to raise funds for youth mental health and suicide prevention.

Alongside 24 other senior executives, Lenore trekked 135km over 5 days from Cape Leeuwin Lighthouse to Cape Naturaliste Lighthouse.

With every dollar raised going towards supporting zero2hero's school programs and mental health leadership camps, the May CEO 2024 Trek raised a whopping \$750,100.

These programs educate, engage and empower young people to support and maintain their own mental health and prevent suicide in the community.

Since first launching in 2018, the cape2cape Trek has raised over \$2,410,000 with over 300 heroes stepping up and taking part! An amazing feat for a fantastic cause!



Perth Tradie Expo

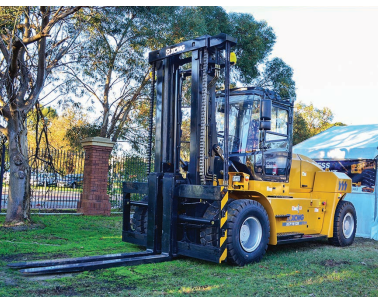
Brooks Equipment Showcase

New XCMG Models

For another year running, Brooks turned up and out for the Perth Tradie Expo. Partnering with XCMG, the 2024 Brooks stand showcased the extensive range of equipment now available for sale, giving customers an opportunity to see the machines up close, and chat to the specialist Salesmen.

Running from Friday, 14th through to Sunday, 16th June, it was the 10th anniversary of the Expo, and by far the largest to date. On site, Brooks had XCMG excavators ranging in size from 1.8t through to 9.5t, a 16.5t loader, skid steers from 890kg through to 1.26t, and a whole lot more.

Catering to the little kids as well as the big ones, Brooks' range of kids' ride-on toys and colouring-in activities were well used.



With new branches opening, the Brooks People & Culture team were also in force at the Expo, discussing new jobs available across our Brooks divisions.



Fenjiu Perth Night

On the 18th of April, the Brooks family and team celebrated the launch of Fenjiu Chinese Rice Wine, with industry friend and owner, Andy Liu. Held at the new Double Tree by Hilton Perth Waterfront, it was a fantastic evening with addresses from the Fenjiu Chinese Rice Wine team, entertainment, and tastings of the spirit, characterised by its rich and elegant flavour.



CCF WA Industry and Training Awards

CCF WA's Western Australian Civil Construction Industry & Training Awards were held on the 19th April. Celebrating our industry's individual and corporate achievements, Brooks put forward two of our fantastic staff members for their outstanding achievements in the industry, and immeasurable contributions to our workplace. Congratulations to Kirsten Swenson, nominated for the Women in Civil Award, and Josie Jenkins, nominated for Administration Coordinator of the Year.



HBF Run for a Reason



Brooks team Kirsten and Aria joined XCMG teammate, Heming, for the HBF Run for a Reason in Perth. Choosing a charity of their choice, over 30,000 participants ran, walked, and wheeled for a great cause!

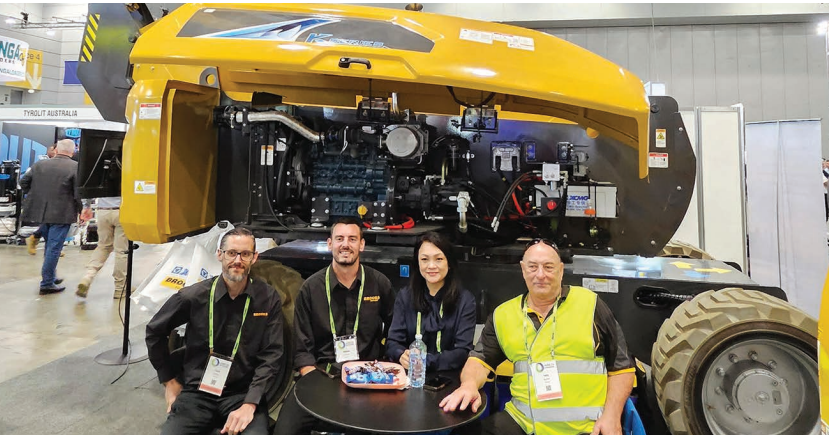
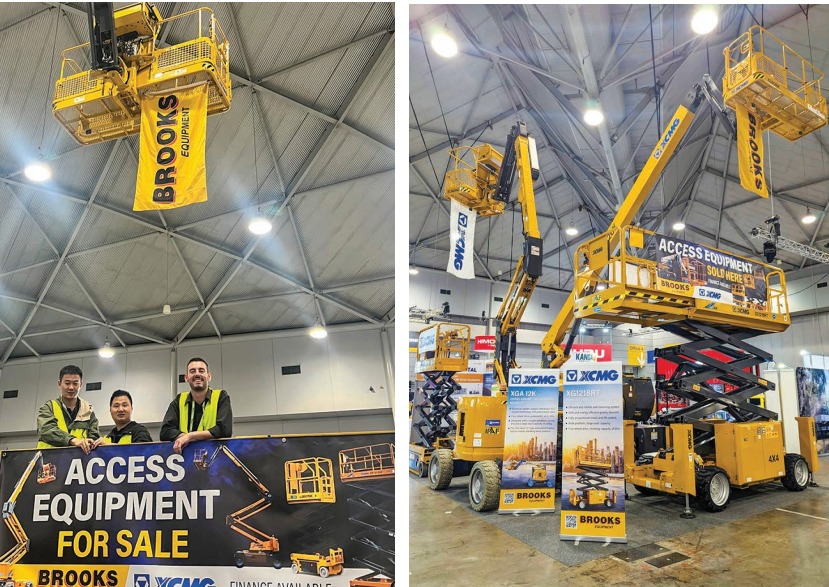
MACA Cancer 200 Charity Golf Day

Brooks Access Account Manager, Jacinta, joined MACA at the annual MACA Cancer 200 Charity Golf Day. Each year, teams 'putt for the Perkins', raising funds for the Harry Perkins Institute of Medical Research, with the MACA women's team taking home the NAGA award.



HIRE24 Brisbane

In the heart of Brisbane's CBD, the Hire and Rental Industry Association's HIRE24 event showcased the best that the industry has to offer. Over several days, the event saw suppliers showcasing the latest in technology, innovation, and products, as well as speeches from industry leaders, educational workshops and social events to network. The Brooks team were out in force, alongside XCMG, showcasing the dynamic range of access equipment available for hire and sale.



Silverstone Golf Day

The Brooks team of Adrian, Bella, Steph, and Dave, took to the green for Silverstone's Inaugural Charity Golf Day, supporting the great work of Lifeline! Sponsoring a hole, donations from the event went to Lifeline's suicide prevention crisis support services.



TSBE Contractor Connector

Hire Coordinator, Madi, and BDM, Gary, attended the TSBE Contractor Connector in Brisbane. With Pauline Elliott, Head of Commercial Partnerships at CS Energy, as the guest speaker for the evening, the event was a great opportunity to network with others in the construction sector and gain insights from diverse industry perspectives.



On the Great Open Road

Our Business Development Manager, Gary, has been making his way across the country, visiting clients across the west and east coast. His travels have taken him through Western Australia, Darwin, and Queensland, visiting clients in Mt Isa, Hughenden, Cairns, Townsville, and Mackay. Martini, his four-legged friend, has joined him along the way.

Barkley Hwy closed with floods



"Tini" making the most of the floods



A flooded Barkley and Flinders highway couldn't stop him, so if you're wanting to chat machines for hire or sale, get in touch and he'll make it happen.

New XCMG machines arriving in Oxley, QLD.



Downtime with Clients in Darwin



Client site visit, Wooroloo, WA



Client site visit, Capella, QLD



Driving from Cairns to Townsville, QLD



Gary's travels will see him in Brisbane in early August before heading to NSW and SA, so look out for the Brooks-wrapped vehicle on the road, or contact 1300 Brooks to schedule a catch-up.

Young Professionals Development Program

Our Service Manager, Luke, recently completed the HRIA Young Professionals Development Program. Created to encourage and support the career development of the future leaders of the hire industry, the program partners mentees with mentors, leading facilitated sessions to hone goals, habits, personal brand, digital literacy, self evaluation and business acumen. Congratulations and well done, Luke!



Super Deal Prize Draw



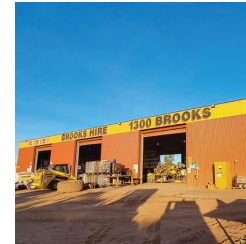
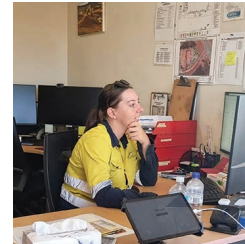
Andrew from Newlands Group in Toowoomba, was the lucky winner of an Adina Oceaneer watch, valued at \$399, in our monthly Super Deal Prize Draw. Hire Coordinator, Madi, delivered the watch!

Brooks Out & About

The Brooks team have been travelling across the country, with branch visits, site visits, and client fly-bys. Here are a couple of happy snaps from along the way.



Bubs of Brooks!
Our Access Leading Hand, Blake, sent through this cute snap of his daughter, Daisy May, sporting one of the new Brooks beanies.



Property Manager, Khong, visited our Port Hedland branches, preparing for the new branch setup and routine upgrades.

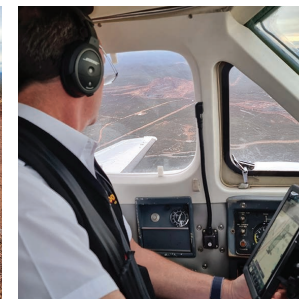


Kim, from our Marketing team, paid a visit to the Brooks Bunbury team.



BDM, Gary, Chief Procurement Officer, Vinny, and XCMG representative, Heming, visited our Withcott branch while in town for the Brisbane Hire24.

The team headed up in a Brooks Airways aircraft with clients, over the pilbara region of WA, showcasing their machines in action. What a view from 2,600ft.



Across the Pond

The Medical Air team perform countless medevacs around the globe each month. Two recent missions saw the team repatriating patients from the Cocos Islands and Lombok. Pictured, is Flight Nurse Greta, HOTC Andrew, Dr Rob, and Check Captain, Ian.



Welcome Aboard

Jarrad Giles

What was your first job:
App Heavy Duty Mechanic.

What is your role at Brooks:
Workshop Forman, Geraldton WA.

What achievement in life are you most proud of:
Completing the Australian Dakar Rally and winning my class.



How would you describe yourself in 3 words:
Determined, outgoing and trustworthy.

What is something that you're really good at:
Mechanics.

What is something that you're really bad at:
Housework.

If you could invite anybody to dinner (dead or alive), who would it be: My Pop, Giles.

What did you want to be when you were growing up:
Architectural Drafter.

Favourite cake: Lemon Cheesecake.

Favourite song: "She's My Ute" by Lee Kernighan.

Favourite holiday destination: Kalbarri, WA.

Sam Murphy

What was your first job:
Business and Civil Traineeship.

What is your role at Brooks:
Sales Representative, Brooks Equipment WA.

What achievement in life are you most proud of: Love Island experience on Mock Cast, and winning a National Premier League medal in football.



How would you describe yourself in 3 words:
Motivated, Confident, Ambitious.

Where would we find you on the weekends:
Butterfly Nightclub or out for a nice dinner with my friends.

What is something you're really good at: Gym and Business.

What is something you're really bad at: Basketball.

If you could invite anybody to dinner (dead or alive), who would it be: Andrew Tate and Tristan Tate.

What did you want to be when you were growing up:
Professional Footballer or Movie Star.

Favourite cake: Strawberry Cheesecake.

Favourite song: "Casanova" by Sool king, Gazo.

Favourite holiday destination: Orlando, Florida.

Monica Dransfield

What was your first job:
Sales assistant at Red Dot.

What is your role at Brooks:
Sales Coordinator, Brooks Equipment, Welshpool, WA.

What did you want to be when you grew up:
A youth worker.

What achievement in life are you most proud of: My kids.



How would you describe yourself in 3 words:
Helpful, giving & honest.

Where would we find you on the weekends:
Hanging out at home.

What is something that you're really good at: Nagging (just ask my husband).

What is something that you're really bad at: Dancing.

If you could invite anybody to dinner (dead or alive), who would it be: My nonna.

Favourite Cake: Lemon cheesecake.

Favourite Song: "So what" by P!nk.

Favourite holiday destination: Maldives.

Sean Chase

What was your first job:
Farmhand.

What is your role at Brooks: Sales Representative, Brooks Equipment, SA.

What did you want to be when you grew up:
Police Officer.

What achievement in life are you most proud of: My daughter, Hayley.



How would you describe yourself in 3 words:
Social, Outgoing, Friendly.

Where would we find you on the weekends:
Scratching around on my block, or out with friends/family.

What is something that you're really good at: Fishing.

What is something that you're really bad at: Board Games.

If you could invite anybody to dinner (dead or alive), who would it be: Bear Grylls.

Favourite Cake: Pavlova.

Favourite Song: "Tennessee Whiskey" by Chris Stapleton.

Favourite holiday destination: Canada.

Stephen Greenwood



What was your first job:
Slaughterman at STM Meats in Altona.

What is your role at Brooks:
Workshop Foreman, Melbourne VIC.

What did you want to be when you grew up:
Mechanic.

What achievement in life are you most proud of: I have 3 of them.... All boys.

How would you describe yourself in 3 words:
Get it done.

Favourite Cake: Yes.

Where would we find you on the weekends:
In the bush stalking deer.

What is something that you're really good at: Solving problems.

What is something that you're really bad at: Getting to bed on time.

If you could invite anybody to dinner (dead or alive), who would it be: Peter Freuchen - if you don't know who he is look him up. That man lived one hell of a life!

Favourite Song: "Free Bird" by Lynyrd Skynyrd.

Favourite holiday destination: Talbotville in the Vic High Country.... Actually the Vic High Country as a whole.

Bella Martin



What was your first job:
Waitress.

What is your role at Brooks:
Business Representative, Perth WA

What did you want to be when you grew up: Scientist.

What achievement in life are you most proud of: In school, I struggled a lot in social environments. After school I made it my mission to change this by pushing myself out of my comfort zone in my personal life and my career. Now, I feel like a completely different person!

How would you describe yourself in 3 words:
Energetic, genuine, and determined.

Where would we find you on the weekends:
At home with my puppy.

What is something that you're really good at:
Staying optimistic.

What is something that you're really bad at:
Physics.

If you could invite anybody to dinner (dead or alive), who would it be: The Kardashians haha.

Favourite Cake: Cheesecake!!

Favourite song: "Hypnotise" or "Juicy" by Biggie never gets old.

Favourite holiday destination: Would love to spend more time in Jamaica.

Jesse Brown



What was your first job:
Red Rooster.

What is your role at Brooks:
ICT Officer, Welshpool WA.

What did you want to be when you grew up: A doctor.

What achievement in life are you most proud of: My Family - Wife and 2 Daughters.

How would you describe yourself in 3 words: Chill, Talkative, Goofy.

Where would we find you on the weekends:
Bouldering or at the park with family.

What is something that you're really good at:
Drums and Guitar.

What is something that you're really bad at:
Trying to persuade people.

If you could invite anybody to dinner (dead or alive), who would it be: My wife.

Favourite Cake: Ice Cream Cake!

Favourite song: "Since K Got Over Me" by The Clientele.

Favourite holiday destination: Italy.

Serene Yap

What was your first job:

Accounts Assistant for Winery Clients.

What is your role at Brooks:

Accounts Administration, Welshpool WA.

What did you want to be when you grew up:

Police officer.

What achievement in life are you most proud of:

Climb Mount Kinabalu in Sabah (Fourth tallest mountain in South East Asia), although only reach 3272.7m because of bad weather we could not go for the second climb in the early morning.

How would you describe yourself in 3 words:

Introvert, Organized and Sporty.

Where would we find you on the weekends: Chill at home.

What is something that you're really good at:

Avoiding cats in the past.

What is something that you're really bad at: Hating cats now, am helplessly in love with them lol.

If you could invite anybody to dinner (dead or alive), who would it be: My family.

Favourite Cake: Chocolate Cake.

Favourite Song: "Any song", try googling it ;)

Favourite holiday destination: Any place as long as my holiday mood is on.



Stacey Elwood

What was your first job:

Paper delivery kid for the local paper.

What is your role at Brooks:

Hire Administrator, Brooks Access, Canning Vale WA.

What did you want to be when you grew up:

An actress.

How would you describe yourself in 3 words:

Outgoing, Confident, Honest.

What achievement in life are you most proud of:

Somehow keeping my two children alive without any prior experience in the field.

Where would we find you on the weekends:

Probably hanging out at home with the family.

What is something that you're really good at:

Buying things I absolutely do not need.

What is something that you're really bad at:

Keeping my household clean.

If you could invite anybody to dinner (dead or alive), who would it be: Pedro Pascal.

Favourite Cake: Lemon Meringue.

Favourite Song: "I don't want to set the world on fire" by The Ink Spots.

Favourite holiday destination: Japan.



Charmaine Van Den Brand



What was your first job:

Meat Wrapper in the Butchers at Coles.

What is your role at Brooks:

Workshop Foreman, Karratha WA.

What did you want to be when you grew up: A model or or an air hostess.

What achievement in life are you most proud of: Raising two beautiful, respectful boys, who both graduated year 12 and are now both in apprenticeships. Completing a Trade Qual. as an HD Fitter, working as an HD Fitter in Mining and Civil Construction for 14 years.

Where would we find you on the week-ends: With my family, maybe at work.

How would you describe yourself in 3 words:
What you see is what you get, honest, helping people.

What is something that you're really good at:
Being a Mum, my Job, and cooking.

What is something that you're really bad at:
Not being able to leave something unfinished; every-thing has to be perfect. Not believing in myself.

If you could invite anybody to dinner (dead or alive), who would it be: My Dad.

Favourite Cake: Pavlova – it's not a cake but it's my favourite.

Favourite Song: I have lots of favourites.

Favourite holiday destination: Anywhere if it's a Holiday.



Madi's Kitchen

Pavlova

Our Hire Coordinator, Madi James, put together this pav beautie. Whether or not you agree it has an Aussie or Kiwi origin story, we'll all agree that this one's delicious.

INGREDIENTS

Pavlova

6 Egg Whites
1 ½ Cups Caster Sugar
¼ tsp Cream of Tartar

Cream Topping

300ml Thickened Cream
¼ tsp Vanilla Extract
2 tbsp Caster Sugar

Toppings

Any Fresh Fruit – my favourites are banana, strawberries & passionfruit.

METHOD

Pavlova

1. Preheat oven to 120°C.
2. Line a baking tray with baking paper and draw a 23cm circle on the paper. Turn the paper over, with the circle facing down.
3. Separate egg whites from the yolk and put in a large bowl.
4. In the bowl of an electric mixer, beat egg whites and cream of tartar on medium speed, until soft peaks form.
5. Gradually add the caster sugar, 1 tablespoon at a time and continue beating for 30 seconds between additions. Once all the sugar has been added, keep mixing until meringue is smooth and glossy. All up, it will take around 10 minutes of mixing.
6. Place mixture onto the tray, within the circle, then use an offset spatula to form the mixture into a high circle, creating furrows along the edges.
7. Bake for 80-90 minutes, until the shell is firm. If you need to check the crispness of the shell after this time, very quickly open the oven and tap the sides, closing the door immediately.
8. Once cooked, turn oven off and leave pavlova to completely cool inside the oven.

Cream

1. Place cream, vanilla and sugar in a mixing bowl.
2. Using a hand whisk, or stand mixer, whisk ingredients until stiff peaks form.
3. Gently spread cream on top of pavlova.

Topping

1. Decorate your Pavlova with fresh fruit in season.



Find the 9 letter word using the letters in the grid, then try to make as many other words as you can. Words must be a minimum of 4 letters and must contain the middle letter. No proper nouns or plurals.

Good - 15 Words **Very Good** - 20 Words **Excellent** - 25 or more

M	N	E
D	A	S
L	T	I

[illegible]

		9				3		
4			9		7			6
2		6		8		9		7
			6		3			
		7				5		
			7		8			
3		4		6		7		1
8			2		5			4
		5				2		

1	2	3	4	5		6	7	8	9		10	11	12	13
14						15					16			
17						18					19			
20				21	22					23				
		24	25					26						
27	28						29	30				31	32	33
34						35						36		
37					38						39			
40				41						42				
43			44						45					
			46					47						
48	49	50				51	52					53	54	55
56					57					58	59			
60					61					62				
63					64					65				

Brain Teasers

What am I?



Three brothers share a family sport - a non-stop marathon. The oldest one is fat and short; and trudges slowly on. The middle brother's tall and slim; and keeps a steady pace. The youngest runs just like the wind, speeding through the race.

"He's young in years, we let him run," the other brothers say. "Cause, though he's surely number one, he's second, in a way."

Name the brothers.

Kids' Corner

Join the Dots & Colour In

Get Mum or Dad to take a photo of your work and email it to marketing@brookshire.com.au with your name and age for your chance to win a cool prize.



Tiggera Rodrigues - Age 5 Cooper Lane - Age 9 Lucas Sambuco - Age 5 Jamieson Swart - Age 8 Mackenzie Luc Ilagan - Age 6 Indi-Rose Swart - Age 11

Congratulations to all of the winners from our last edition. You will all be receiving a prize in the post.



Snap That

STAFF PHOTOGRAPHY COMPETITION



Fiona Swart - Perth, WA



Kai Li - Perth, WA



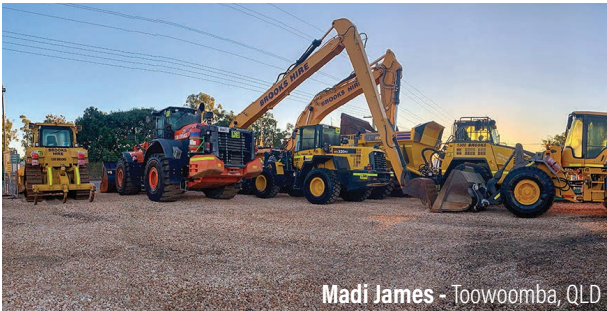
Hayden Rance - Bunbury, WA



Blake Hedley - Perth, WA



Katelyn Gibson - Perth, WA



Madi James - Toowoomba, QLD



Joel Treagus - Oxley, QLD



Ryan Brown - Albany, WA



Andrew Capuana - Perth, WA

Equipment Hire List



CATEGORY	MAKE	MODEL
1.5 Tonne	Komatsu	PC14R
1.75 Tonne	Sany	SY16C
1.8 Tonne	XCMG	XE17U
1.8 Tonne	Caterpillar	301.8
1.85 Tonne	Sany	SY18C
2.26 Tonne	Caterpillar	302
2.76 Tonne	Sany	SY26U
3 Tonne	Komatsu	PC30MR
3 Tonne	Hitachi	ZX33
3.85 Tonne	Sany	SY35U
5 Tonne	Komatsu	PC55MR
5 Tonne	Komatsu	PC45MR
5 Tonne	Komatsu	PC40MR
5.3 Tonne	Sany	SY50U
6.1 Tonne	Sany	SY60C
7.28 Tonne	Sany	SY75C
8 Tonne	Komatsu	PC78MR
8.5 Tonne	Komatsu	PC88MR
8.8 Tonne	Sany	SY80U
9 Tonne	Caterpillar	308CR
9.1 Tonne	Sany	SY95C
14 Tonne	Komatsu	PC138US
14 Tonne	Komatsu	PC160LC
14 Tonne	Hyundai	R140LC
15.1 Tonne	Sany	SY135C
16 Tonne	Sany	SY155U
16 Tonne	Hitachi	ZX160LC
22 Tonne Zero Swing	Komatsu	PC228US
22 Tonne	Caterpillar	320GC
22 Tonne	Caterpillar	320DL
22 Tonne	Hitachi	ZX210H
22 Tonne	Komatsu	PC200LC

CATEGORY	MAKE	MODEL
22 Tonne	Komatsu	PC210LCi
22 Tonne	Komatsu	PC210LC
22 Tonne	Komatsu	HB215LC
22.6 Tonne	Sany	SY215C
23 Tonne	Komatsu	PC220LC
23 Tonne	Hitachi	ZX225USLC
30 Tonne	Volvo	EC290CLC
30 Tonne	Komatsu	PC270LC
31.5 Tonne	Sany	SY305H
33 Tonne	Hitachi	ZX330
33 Tonne	Hitachi	ZX350H
34 Tonne	Komatsu	PC300LC
35 Tonne	Hitachi	ZX350LC
36 Tonne	Komatsu	PC360LCi
36 Tonne	Komatsu	PC350LC
36.7 Tonne	Sany	SY365H
37 Tonne	Caterpillar	336
45 Tonne	Komatsu	PC450LC
49.7 Tonne	XCMG	XE500LC
54.5 Tonne	Sany	SY500H
60 Tonne	Komatsu	PC600LC
76.2 Tonne	Sany	SY750H
78.6 Tonne	Sany	SY870H
80 Tonne	Komatsu	PC850-8E0SE
85 Tonne	Komatsu	PC800LC
121 Tonne	XCMG	XE1350
192 Tonne	XCMG	XE2000



CATEGORY	MAKE	MODEL	ENGINE	WEIGHT
1.5m³	Komatsu	WA150	74 kW 99 HP @ 2000 rpm	7.5 Tonne
2.1m3	XCMG	XC938	99 kW / 132 HP	11 Tonne
2.1m³	Caterpillar	930K	110 kW @ 1600 rpm	13 Tonne
2.5m³	Komatsu	WA250	124 kW 166 HP @ 2000 rpm	14 Tonne
3.1m³	Komatsu	WA320	124 kW 166 HP @ 2000 rpm	14 Tonne
3.2m3 Electric	XCMG	XC968_EV	270 kW	18.8 Tonne
3.5m³	Komatsu	WA380	140 kW 187 HP @ 2000 rpm	16 Tonne
3.75m³ - 4m³	Komatsu	WA430	173 kW / 232 HP @ 2.100 rpm	18 Tonne
3.4m³	Caterpillar	950M	187 kW 250 HP	20 Tonne
3.5m3	XCMG	XC958	164 kW / 2200 rpm	18.7 Tonne
3.6m³	Caterpillar	962M	185 kW 248 HP	20 Tonne
4m³ - 5m³	Komatsu	WA470	204 kW / 274 HP @ 2.000 rpm	23 Tonne
4.5m3	XCMG	XC978	216 kW / 2100 rpm	24.5 Tonne
5m³	Komatsu	WA480	223 kW / 299 HP	25 Tonne
4m³ - 5m³	Volvo	L150G	210 kW / 1400 rpm	25 Tonne
4.7m³ - 6.4m³	Komatsu	WA500	266 kW / 357 HP @ 1900 rpm	32 Tonne
5.6m³	Caterpillar	980M	278 kW	30 Tonne
5.6m³	Caterpillar	982M	278 kW @ 1800 rpm	35 Tonne
5.6m³	Hitachi	ZW370	289kW @ 1800 rpm	35 Tonne
6.4m³	Caterpillar	988K	403 kW	51 Tonne
6.4m³	Komatsu	WA600	395 kW / 529 HP @ 1800 rpm	55 Tonne
6.5m3	XCMG	LW1200KN	418 kW	50.5 Tonne
7m³	Volvo	L260H	309 kW / 420 HP	34 Tonne
13m³	Komatsu	WA900	638 kW / 856 HP	107 Tonne



CATEGORY	MAKE	MODEL	ENGINE	WEIGHT
2.2m³ - 2.3m³	Komatsu	WA250PT	104 kW 140 HP / 2000 rpm	10 Tonne
2.2m³ - 2.3m³	Komatsu	WA250PZ	103 kW 138 HP @ 2000 rpm	12 Tonne
1.9m³ - 2.7m³	Komatsu	WA270	111 kW 149 HP @ 2000 rpm	13 Tonne
2.5m³ - 2.7m³	Komatsu	WA320-8	123 kW/165 HP @ 2100 rpm	15 Tonne
2.5m³ - 2.7m³	Komatsu	WA320PZ-6	125 kW / 167 HP	15 Tonne
2.5m³ - 2.7m³	Volvo	L90F	129 kW @ 1700 rpm	16 Tonne
3m³	Volvo	L110F	170 kW @ 1700 rpm	19 Tonne
3.1m3	Hitachi	ZW180-5	126 kW @ 1500 rpm	14.5 Tonne
3.5m³	Volvo	L120F	180 kW @ 1700 rpm	20 Tonne
4.2m³	Volvo	L150F	209 kW @ 1400 rpm	23 Tonne
4.4m³	Volvo	L180F	234 kW @ 1400 rpm	26.6 Tonne
5.2m³	Volvo	L220H	279 kW 379 HP @ 1400 rpm	32.8 Tonne



Rollers

CATEGORY	WEIGHT	MAKE	MODEL
Smooth Drum	7 Tonne	Bomag	BW177DH
Smooth Drum	11 Tonne	Dynapac	CA252D
Smooth Drum	11 Tonne	Bomag	BW212D
Smooth Drum	12 Tonne	Hamm	3412 HT VIO
Smooth Drum	12 Tonne	Caterpillar	CS64B
Smooth Drum	12 Tonne	Bomag	BW213D
Smooth Drum	12.5 Tonne	Caterpillar	CS56B
Smooth Drum	12.7 Tonne	Dynapac	CA302D
Smooth Drum	13.2 Tonne	Dynapac	CA362D
Smooth Drum	12.6 Tonne	Bomag	BW213D
Smooth Drum	14.3 Tonne	Caterpillar	CS68B
Smooth Drum	15.7 Tonne	Hamm	3516
Smooth Drum	16 Tonne	Caterpillar	CS74B
Smooth Drum	16 Tonne	Caterpillar	CP76B
Smooth Drum	16.1 Tonne	Bomag	BW216D
Smooth Drum	17.89 Tonne	Hamm	3518
Smooth Drum	18.7 Tonne	Caterpillar	CS78B
Smooth Drum	19.3 Tonne	Dynapac	CA6000D
Smooth Drum	19.8 Tonne	Hamm	3520
Smooth Drum	20 Tonne	Caterpillar	CS79B
Smooth Drum	26 Tonne	XCMG	XS263J
Padfoot	12 Tonne	Caterpillar	CS12 GC
Padfoot	12 Tonne	Caterpillar	CS56B
Padfoot	12 Tonne	Bomag	BW211D
Padfoot	12.6 Tonne	Bomag	BW213D
Padfoot	13.2 Tonne	Dynapac	CA362D
Padfoot	15.7 Tonne	Hamm	3516P
Padfoot	16.1 Tonne	Bomag	BW216PD
Padfoot	17.6 Tonne	Caterpillar	CP76B
Padfoot	17.89 Tonne	Hamm	3518P
Padfoot	18 Tonne	Dynapac	CA6000PD
Padfoot	18.6 Tonne	Dynapac	CA602PD
Padfoot	19.4 Tonne	Bomag	BW219PD
Padfoot	19.8 Tonne	Hamm	3520P
Padfoot	26 Tonne	XCMG	XS263
Multi Tyre	18 Tonne	Hamm	HP280
Multi Tyre	18 Tonne	Caterpillar	CW34
Multi Tyre	18.3 Tonne	Hamm	GRW280
Multi Tyre	20 Tonne	Caterpillar	CW34
Multi Tyre	20 Tonne	Ammann	AP240
Multi Tyre	20 Tonne	Bomag	BW24RH

CATEGORY	WEIGHT	MAKE	MODEL
Multi Tyre	20 Tonne	Bomag	BW25RH
Multi Tyre	24 Tonne	Caterpillar	CW34LRC
Double Drum	765 Kg	Husqvarna	LP 6505
Double Drum	1 Tonne	Husqvarna	LP 7505
Double Drum	2.5 Tonne	Caterpillar	CB2.7
Double Drum	2.6 Tonne	Hamm	HD12VV
Double Drum	2.8 Tonne	Bomag	BW120AD
3 Pin Static	14 Tonne	Aveling Barford	DC014
Trench Roller	1,340 Kg	Ammann	1575
Trench Roller	1,495 Kg	Wacker Neuson	RTX-SC3
Trench Roller	1,595 Kg	Dynapac	D.ONE 850
Trench Roller	1,675 Kg	Husqvarna	LP9505



Compactors & Tampers

CATEGORY	WEIGHT	MAKE	MODEL
Tampers	98kg	Husqvarna	LT800
Plate Compactors	185kg	Husqvarna	LG164
Plate Compactors	244kg	Husqvarna	LG204
Plate Compactors	302kg	Husqvarna	LG300
Plate Compactors	436kg	Husqvarna	LG400
Plate Compactors	500kg	Bomag	BPR 70/70D
Plate Compactors	500kg	Dynapac	LG500
Plate Compactors	750kg	Bomag	BPR 100/80
Plate Compactors	750kg	Dynapac	LH700
Plate Compactors	800kg	Husqvarna	LH804



Compressors

TYPE	AIR FLOW	DRY WEIGHT	PRESSURE
Trailer	127 cfm	700 kg	7 bar
Trailer	176.5 cfm	800 kg	7 bar
Skid	185 cfm	950 kg	7 bar
Trailer	251 cfm	1400 kg	7 bar
Skid	400 cfm	1920 kg	10 bar
Trailer	423 cfm	2000 kg	7 bar
Trailer	530 cfm	2600 kg	10 bar
Trailer	893 cfm	3700 kg	8 bar
Trailer	938 cfm	5300 kg	12 bar
Trailer	1020 cfm	5300 kg	10.3 bar
Trailer	1102 cfm	5300 kg	8.6 bar



Graders

CATEGORY	MAKE	MODEL	WEIGHT
12' Motor Grader	Komatsu	GD555	8 Tonne
12' Motor Grader	Caterpillar	120M	14.5 Tonne
12' Motor Grader	XCMG	GR2405T	17.5 Tonne
12' Motor Grader	XCMG	GR2605T	19 Tonne
14' Motor Grader	Caterpillar	140M	18.4 Tonne
14' Motor Grader	Caterpillar	140M AWD	18.4 Tonne
14' Motor Grader	Caterpillar	140H	18.4 Tonne
14' Motor Grader	Caterpillar	140G	18.4 Tonne
14' Motor Grader	Caterpillar	150 AWD	19.8 Tonne
14' Motor Grader	Komatsu	GD655	18.5 Tonne
14' Motor Grader	John Deere	770G	19.3 Tonne
14' Motor Grader	John Deere	672G	20 Tonne
14' Motor Grader	John Deere	772GP	20.5 Tonne
15' Motor Grader	XCMG	GR3005T	28.5 Tonne
16' Motor Grader	John Deere	872GP	21.6 Tonne
16' Motor Grader	Caterpillar	16MQLR	30 Tonne
16' Motor Grader	XCMG	GR3505T Pro	32 Tonne
24' Motor Grader	Caterpillar	24	73 Tonne
24' Motor Grader	XCMG	GR5505	74 Tonne



Dozers

CATEGORY	MAKE	MODEL	BLADE WIDTH
17.3 Tonne	Caterpillar	D6N	4080mm
17.7 Tonne	Caterpillar	D6H	4486mm
21 Tonne	Caterpillar	D6T XL	3693mm
21 Tonne	Caterpillar	D6T LGP	3693mm
27 Tonne	Caterpillar	D7	3988mm
39.4 Tonne	Caterpillar	D8	5045mm
70 Tonne	Caterpillar	D10T	7416mm



Articulated Dump Trucks

CATEGORY	PAYLOAD	MAKE	MODEL
Articulated	30 Tonne	Komatsu	HM300
Articulated	37 Tonne	Hitachi	AH400D
Articulated	40 Tonne	Komatsu	HM400
Articulated	41 Tonne	Caterpillar	745



Site Dumpers

CATEGORY	PAYLOAD	MAKE	MODEL
Side Tipper	9 Tonne	Wacker Neuson	DV90
Front Tipper	9 Tonne	Thwaites	9T Dumper



Water Trucks

CATEGORY	CAPACITY	MAKE	MODEL
Rigid	14,000 L	Isuzu	FVZ 260-300
Rigid	14,000 L	Hino	500
Rigid	15,000 L	Isuzu	FVZ 260-300
Rigid	15,000 L	Hino	500
Rigid	15,000 L	Mercedes Benz	Axor
Rigid	20,000 L	Isuzu	FYH 2000 8x4
Rigid	20,000 L	Iveco	Trakker AD450 6x6
Articulated	16,000 L	JCB	Fastrac 185/65
Articulated	16,000 L	Chamberlain	C6100
Articulated	16,000 L	Mercedes Benz	MB Trac
Articulated	26,000 L	Komatsu	HM300
Articulated	35,000 L	Komatsu	HM400



Service, Fuel & Tipper Trucks

CATEGORY	CAPACITY	MAKE	MODEL
Service Truck	8 Compartments	Isuzu	FVZ 260 - 300
Service Truck	8 Compartments	Hino	500
Fuel Trailer	1,400 L	-	-
Fuel Trailer	2,000 L	-	-
Fuel Truck	14,000 L	Hino	500
Tipper Truck	11m³	Isuzu	FVZ 260-300
Tipper Truck	11m³	Hino	500
Tipper Truck	11m³	Isuzu	FVZ 1400
Side Tipper	21m³	Howard Porter	-
Side Tipper	24m3	Road West	-



Backhoes

DIG DEPTH	MAKE	MODEL	WEIGHT
4.32m	JCB	4CX	8.178 Tonne
4.8m	Komatsu	WB97R-5E0	7.6 Tonne
4.883m	Caterpillar	432E	9.1 Tonne
6.14m	JCB	5CX	10.6 Tonne



Skid Steer Loaders

CATEGORY	MAKE	MODEL	TIPPING LOAD (35%)
Tracked	Bobcat	T140SJC	635kg
Tracked	Caterpillar	239D	695kg
Tracked	Caterpillar	249D	790kg
Tracked	Caterpillar	259D	915 kg
Wheeled	Komatsu	SK714	650kg
Wheeled	Caterpillar	226B	680kg
Wheeled	XCMG	XC7-SR07	890kg
Wheeled	XCMG	XC7-SR08	955kg
Wheeled	Caterpillar	246C	975kg



Telehandlers

LIFTING WEIGHT	MAKE	MODEL	LIFTING HEIGHT
3 Tonne	JCB	531-70	7000mm
3.2 Tonne	Manitou	MT732	6900mm
3.5 Tonne	JCB	535-95	9500mm
4 Tonne	JCB	541-70	7000mm
4 Tonne	Merlo	TF42.7-100	9500mm
4 Tonne	Manitou	MT-X 1440	13530mm
4 Tonne	Manitou	MT-X 1840	17550mm
6 Tonne	Merlo	P60.10EE	9550mm



Forklifts

LIFTING HEIGHT	MAKE	MODEL	LOAD CAPACITY
3000 mm	Hyster	H4.0FT	4 Tonne
4000 mm	Hyster	H5.0FT	5 Tonne
5336 mm	Hyster	H8.00XM	8 Tonne
6200 mm	Hyster	H16.00XM	16 Tonne
4,000 mm	XCMG	XCF1612KII	16 Tonne



Cranes

MAKE	MODEL	WEIGHT	MAXIMUM BOOM LENGTH
Franna	AT22	22 tonnes	17.9m
Franna	MAC 25	25 tonnes	18.4m



Articulated Boom Lifts

HEIGHT	MAKE	MODEL	CATEGORY
34 ft	JLG	H340AJ	Hybrid
34 ft	Genie	Z34 / 22 N	Electric
45 ft	JLG	450AJ	Diesel
45 ft	Genie	Z-45 XC	Rough Terrain
51 ft	Genie	Z-51 / 30J RT	Rough Terrain
62 ft	Genie	Z-62 / 40	Rough Terrain
80 ft	JLG	H800AJ	Hybrid
80 ft	JLG	800 AJ	Diesel
80 ft	Haulotte	HA26 RTJ PRO	Diesel
80 ft	Genie	Z-80 / 60	Rough Terrain
125 ft	JLG	1250AJP	Diesel
135 ft	Genie	ZX-135 / 70	Rough Terrain



Scissor Lifts

HEIGHT	MAKE	MODEL	CATEGORY
19 ft	JLG	ES1932	Electric
19 ft	JLG	R1932	Electric
26 ft	JLG	R2632	Electric
26 ft	Genie	GS-2632	Electric
26 ft	Genie	GS2669 RT	Rough Terrain
32 ft	JLG	ES 3246	Electric
32 ft	JLG	R 3246	Electric
33 ft	Genie	GS 3369 RT	Rough Terrain
33 ft	Genie	GS 3384	Rough Terrain
33 ft	Snorkel	S3370 RT	Rough Terrain
40 ft	JLG	R 4045	Electric
40 ft	Genie	GS-4069 RT	Rough Terrain
40 ft	XCMG	XG1218RT	Rough Terrain
43 ft	Genie	GS-4390	Rough Terrain
46 ft	Genie	GS-4655	Electric
47 ft	JLG	ERT 4769	Rough Terrain
50 ft	XCMG	XG1523RT	Rough Terrain
53 ft	Genie	GS-5390	Rough Terrain
60 ft	XCMG	XG1823RT	Rough Terrain



Telescopic Boom Lifts

HEIGHT	MAKE	MODEL	CATEGORY
45 ft	Genie	S-45 XC	Rough Terrain
65 ft	Genie	S65 XC	Rough Terrain
80 ft	Genie	S-80 XC	Rough Terrain
85 ft	Genie	S-85XC	Rough Terrain
125 ft	Genie	SX-125 XC	Rough Terrain
135 ft	Genie	SX-135 XC	Rough Terrain
150 ft	Genie	SX-150	Rough Terrain



Generators (Diesel and Hybrid)

POWER	OUTPUT	VOLTAGE	WEIGHT
5 kVA	5.5 kW	230V	95 kg
6 kVA	5.2 kW	240V	239 kg
10 kVA	8 kW	240V	391 kg
15 kVA	12.5 kW	240/415V	516 kg
20 kVA	16 kW	240/415V	703 kg
25 kVA	20 kW	240/415V	591 kg
30 kVA	24 kW	240/415V	950 kg
35 kVA	32 kW	240/415V	890 kg
40 kVA	35 kW	240/415V	900 kg
45 kVA	36 kW	240/415V	1085 kg
60 kVA	48 kW	240/415V	1110 kg
80 kVA	64 kW	240/415V	1403 kg
100 kVA	80 kW	240/415V	1685 kg
150 kVA	120 kW	240/415V	2000 kg
200 kVA	160 kW	240/415V	2440 kg
220 kVA	178 kW	240/415V	3670 kg
250 kVA	200 kW	240/415V	24500 kg
300 kVA	240 kW	240/415V	3068 kg
350 kVA	280 kW	240/415V	4439 kg
400 kVA	320 kW	240/415V	4400 kg
450 kVA	360 kW	240/415V	4597 kg
500 kVA	400 kW	240/415V	4800 kg
600 kVA	480 kW	240/415V	5970 kg
670 kVA	536 kW	240/415V	5970 kg
750 kVA	600 kW	240/415V	9200 kg
800 kVA	640 kW	240/415V	10000 kg
910 kVA	728 kW	240/415V	11600 kg
1035 kVA	828 kW	240/415V	11680 kg
1253 kVA	1002 kW	240/415V	14100 kg
1505 kVA	1204 kW	240/415V	14050 kg
1705 kVA	1364 kW	240/415V	15500 kg
2000 kVA	1600 kW	240/415V	16000 kg

*All Generators under 100 kVA are available on trailers.



Diesel Pumps Highhead

INLET SIZE	OUTLET SIZE	Q MAX	MAX HEAD
100 mm	75 mm	40 L/sec	200 m
100 mm	80 mm	42 L/sec	92 m
150 mm	75 mm	50 L/sec	150 m
150mm	100 mm	80 L/sec	180 m
150 mm	100 mm	117 L/sec	101 m
200 mm	150 mm	167 L/sec	101 m
250 mm	200 mm	250 L/sec	70 m
250 mm	200 mm	408 L/sec	109 m



Diesel Pumps Surface Dewatering

SIZE	Q MAX	MAX HEAD
80 mm	45 L/sec	19 m open and silent option
100 mm	69 L/sec	36 m open and silent option
100 mm	77 L/sec	50 m open and silent option
150 mm	150 L/sec	37 m open and silent option
150 mm	141 L/sec	51 m open and silent option
All Pumps under 150 mm size are available on trailers		
200 mm	175 L/sec	30 m open and silent option
200 mm	236 L/sec	50 m open and silent option
300 mm	313 L/sec	29.5 m open and silent option
300 mm	600 L/sec	71 m open and silent option



Submersible Pumps

TYPE POWER	SIZE	Q MAX	MAX HEAD
Dewatering 1 kW	50 mm	10 L/sec	16 m
Dewatering 2 kW	75 mm	14 L/sec	24 m
Dewatering 3.4 kW	75 mm	23 L/sec	23 m
Dewatering 6.6 kW	75 mm	20 L/sec	38 m
Dewatering 8.8 kW	75 mm	28 L/sec	40 m
Dewatering 6.6 kW	100 mm	37 L/sec	25 m
Dewatering 8.8 kW	100 mm	45 L/sec	30 m
Dewatering 14 kW	100 mm	20 L/sec	65 m
Dewatering 22 kW	100 mm	40 L/sec	65 m
Dewatering 30 kW	100 mm	40 L/sec	86 m
Dewatering 22 kW	150 mm	95 L/sec	40 m
Sludge 3.7 kW	75 mm	20 L/sec	13 m
Sludge 9 kW	100 mm	28 L/sec	23 m
Sludge 11 kW	100 mm	42 L/sec	24 m
Sludge 15 kW	100 mm	22 L/sec	27 m
Sludge 37 kW	100 mm	80 L/sec	50 m
Sludge 45 kW	150 mm	124 L/sec	30 m
Sludge 75 kW	150 mm	155 L/sec	48 m
Slurry 3.1 kW	75 mm	15 L/sec	15 m
Slurry 5.7 kW	100 mm	25 L/sec	23 m
Slurry 8 kW	100 mm	28 L/sec	25 m



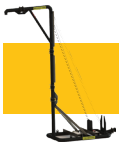
Battery Packs

FEATURES	METRICS
Nominated rated power	36 / 45 kW / kVA
Nominal Energy Storage Capacity	46 kWh
Rated Voltage (VAC)	400 / 230
Battery system voltage (VDC)	48
Nominal Rated Current (A)	65



Compressors

TYPE	AIR FLOW	DRY WEIGHT	PRESSURE
Trailer	127 cfm	700 kg	7 bar
Trailer	176.5 cfm	800 kg	7 bar
Skid	185 cfm	950 kg	7 bar
Trailer	251 cfm	1400	7 bar
Skid	400 cfm	1920 kg	10 bar
Trailer	423 cfm	2000 kg	7 bar
Trailer	530 cfm	2600 kg	10 bar
Trailer	893 cfm	3700 kg	8 bar
Trailer	938 cfm	5300 kg	12 bar
Trailer	1020 cfm	5300 kg	10.3 bar
Trailer	1102 cfm	5300 kg	8.6 bar
Electric Mobile	1286 cfm	2750 kg	5-14 bar



Pump Accessories

Materials and Parts can be supplied at cost price + 20%

DN150 Standpipe	clearance 4.2m
DN150 Standpipe	clearance 4.8m
DN150 Standpipe	clearance 5.2m
DN150 Standpipe	clearance 5.8m
DN150 Standpipe	clearance 6.5m
DN150 Standpipe	clearance 8.6m
DN200 Standpipe	clearance 4.2m
DN200 Standpipe	clearance 4.8m
DN200 Standpipe	clearance 5.2m
DN200 Standpipe	clearance 5.8m
DN200 Standpipe	clearance 6.5m
DN200 Standpipe	clearance 8.6m
Hose & Cable Floats	
HDPE pipe	
Pontoons	
Flow Meters	
Suction Hose	
Discharge Hose	
Remote Monitoring	



Portable Buildings

TYPE	SPECIFICATIONS
Dome Shelters	custom-made
Portable site offices	6.09 m & 12.19 m options, fully furnished
Portable Lunchroom	6.09 m & 12.19 m options, fully furnished
Ablution Block	6.09 m x 2.43 m, 4 cubicles
Sea Containers	6.0 m x 2.5 m & 12.0 m x 2.5 m
Portable Toilets	1160 mm x 1160 mm x 230 mm
Portable Showers	1150 mm x 1150 mm x 230 mm



Lighting Towers Diesel & Solar

LAMP POWER	ILLUMINATED AREA	RUNNING TIME
1800 W	5000 / 500 m²	100 hours
4 x 320 W	4500 / 4200 m²	143 hours
4 x 320 W	5000 m²	218 hours
4 x 350 W	5000 m² @ 20 Lux	220 hours
4 x 350 W	5.4 lm /m² @ 28.328 m²	150 hours
6 x 350 W	315,000	145 hours
6 solar x 100 W	65,000	56 hours
2 solar x 100 W	14,000	35 hours



Power Accessories

TYPE	SIZE	OUTLET
Distribution Board	32 amp	8 x 240V 15A 1 x 415V 20A 1 x 415V 32A
Distribution Board	63 amp	10 x 240V 15A 2 x 415V 20A 2 x 415V 32A
Distribution Board	125 amp	8 x 240V 15A 2 x 415V 32A
Power Cables	20 amp	cable length can be customised
Power Cables	32 amp	cable length can be customised
Power Cables	63 amp	cable length can be customised
Power Cables	100 amp	cable length can be customised
Power Cables	Hardwire	cable length can be customised
Load Banks	100 - 500 kW	in all application

Control Panels, Soft Starters & Variable Speed Drivers are available



Mobile Fuel Supply

TYPE	SIZE	COMMENTS
Fuel Tank	1000 L	Double bundled, multiple fuel connections
Trailer Mounted	1000 L	Double bundled, multiple fuel connections
Fuel Tank	2000 L	Double bundled, multiple fuel connections
Fuel Tank	4000 L	Double bundled, multiple fuel connections
Fuel Tank	10000 L	Double bundled, multiple fuel connections
Trailer Mounted	2000 L	Double bundled, multiple fuel connections

Plant Trailers, Tandem Trailers, Cage Trailers, Pressure Washer Trailers and Fire Fighter Trailer are also available for hire.



Solar Skid

FEATURES	METRICS
Power	1.78 kWp
Voltage (Voc)	196.8 v
Current (Isc)	11.45 A
Dimensions	4455 mm x 2240 mm x 300 mm
Weight	750 kg



Traffic Lights & Signage

CATEGORY	POWER SUPPLY
Traffic Lights	Nominal 12 Volts. Range 10.8 - 14.2V
Variable Message Signs	Nominal 12 Volts. Range 10.8 - 14.2V



Solar CCTV

MAKE	CAMERA
Solareye	2x4MP acusense deep learning cameras, 50m night vision



Solar Hydration Station

FEATURES
Compatible with all 1000L single use water packs
Optional 1500L fixed water storage tank
Insulated enclosure to minimise direct sunlight exposure of water pack
Easy access for forklift load/unload
Flexible inlet hose with quick release connection



Dust Suppression Fans

MAKE	MODEL	ELECTRICAL ENGINE POWER
Generac	DF 4500	4kW
Generac	DF 7500	7.5kW
Generac	DF 15000	15kW
Generac	DF 20000	20kW
Generac	DF 50000	45kW
Generac	DF 110000	100kW



Commercial Vehicles

SEATS	CATEGORY	MODEL
12 & 22	Mine Spec Buses	Toyota HiAce / Coaster & VW Crafter
7	Mine Spec 4x4 Wagon	Toyota Land Cruiser & Prado
2 & 5	Mine Spec 4x4 SC & DC	Toyota Hilux & WorkMate
5	Mine Spec 4x4 DC Steel Tray	Mitsubishi Triton & Isuzu D-Max



Portable Steel Barrier

FEATURES	METRICS
Weight (12 m)	1155 kg
Weight (6 m)	562 kg (male) & 555 (female)
Lifting Capacity (6 m)	6.09 m & 12.19 m options, fully furnished
Lifting Capacity (6 m)	4.1 times the weight of 6 m Section.
Lifting Capacity (12 m)	2.0 times the weight of 12 m Section.



Bulk Water Storage

BRAND	SIZE	COMMENTS
Break Tanks	2 - 60 KL	Fitted with stair & gantry system
Water Storage	2 - 56 KL	Can be modified to suit any application



Machine Attachments

CATEGORY	ATTACHMENT	CATEGORY	ATTACHMENT
Excavator	GP Bucket	Tool Handler	GP Bucket
Excavator	Batter Bucket	Tool Handler	Rake Bucket
Excavator	Trenching Bucket	Tool Handler	Stemming Bucket
Excavator	Skeleton Bucket	Tool Handler	Grain Bucket
Excavator	Sieve Bucket	Tool Handler	Forks
Excavator	Screening Bucket	Tool Handler	Jib
Excavator	Trapezoidal Bucket	Tool Handler	Log Forks
Excavator	Tilting Bucket	Tool Handler	Man Cage
Excavator	Rock Breaker	Tool Handler	Tyre Grab
Excavator	Auger	Tool Handler	GPS
Excavator	Misu Heavy Duty Screen		
Excavator	GP Grapple	Backhoe	GP Bucket
Excavator	360° Grapple	Backhoe	Trenching Bucket
Excavator	Rock Grapple	Backhoe	Batter Bucket
Excavator	Hydraulic Grapple	Backhoe	Batter Bucket (Digger)
Excavator	Mechanical Grab	Backhoe	Auger
Excavator	Hydraulic Grab	Backhoe	Forks
Excavator	Sleeper Grab	Backhoe	GPS
Excavator	Plate Compactor		
Excavator	Compaction Wheel	Telehandler	GP Bucket
Excavator	Tree & Stump Mulcher	Telehandler	Batter Bucket
Excavator	Ripper	Telehandler	Forks
Excavator	GPS	Telehandler	Jib
		Telehandler	GP
Skid Steer	GP Bucket		
Skid Steer	Rake Bucket	Grader	Roller
Skid Steer	Forks	Grader	GPS
Skid Steer	Bucket Broom		
Skid Steer	Auger	Tractor	Grid Roller
Skid Steer	Trencher	Tractor	Hydraulic Angle Broom
Skid Steer	Levelling Attachment		
Skid Steer	GPS		



Australian

BROOKS
EQUIPMENT

Mine Site Ready



BROOKS EQUIPMENT SALES IS YOUR XCMG DEALERSHIP

Now selling new XCMG equipment in Western Australia, South Australia, Northern Territory, and the majority of Queensland.

EXCAVATORS

1.8t Mini to 672t Mining



LOADERS

Bucket Capacity 2.1m³ - 6.5m³



HAUL TRUCKS

120t - 300t



ARTIC. DUMP TRUCKS

30t - 40t



GRADERS

3.6m blade to 7.3m blade



ROLLERS

Smooth & Padfoot - 2.7t - 26t



DOZERS

17.4t - 35.6t



SKID STEERS

890kg - 3.8t



FORKLIFTS

2.3t - 45t



TELESCOPIC BOOM LIFTS

22m to 58.6m



ARTICULATED BOOM LIFTS

12.5m - 26.6m



SCISSOR LIFTS

7.8m to 18.1m



Authorised Dealers for



BROOKS
EQUIPMENT

1300 BROOKS (276 657)

@ sales@brooksequipment.com.au

www.brooksequipment.com.au